

AMES, IOWA


AL-5307 (FAA)

25163

WAAS CH <b>63117</b> <b>W13A</b>	APP CRS <b>133°</b>	Rwy Ldg <b>3491</b> TDZE <b>930</b> Apt Elev <b>956</b>
--	------------------------	---

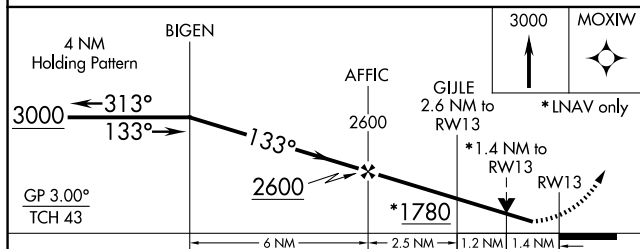
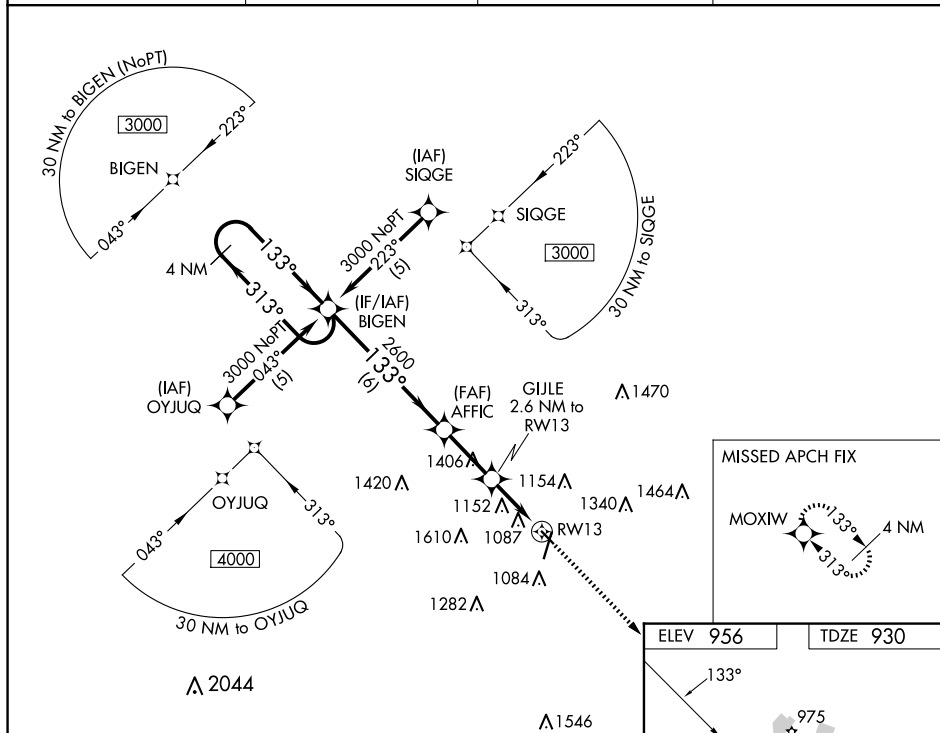
RNAV (GPS) RWY 13  
AMES MUNI (AMW)

RNP APCH.

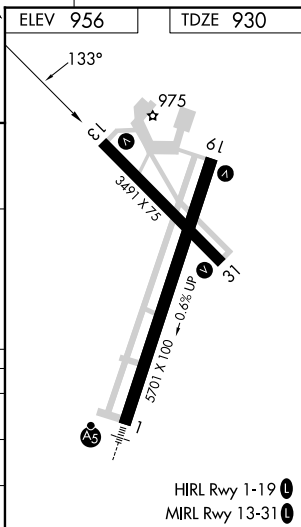
 -26°C For uncompensated Baro-VNAV systems, LNAV/VNAV NA below -16°C or above 54°C.  
Rwy 13 helicopter visibility reduction below  $\frac{3}{4}$  SM NA.

**MISSED APPROACH:** Climb to 3000 direct MOXIW and hold.

ASOS <b>132.025</b>	DES MOINES APP CON <b>123.9 307.15</b>	CLNC DEL <b>126.0</b>	UNICOM <b>122.7 (CTAF) 0</b>
------------------------	---	--------------------------	---------------------------------



CATEGORY	A	B	C	D
LPV DA	1224-1 294 (300-1)			NA
LNAV/ VNAV DA	1478-2 548 (600-2)			NA
LNAV MDA	1420-1 490 (500-1)		1420-1¼ 490 (500-1¼)	NA



AMES, IOWA  
Amdt 1B 18JUL19

42°00'N-93°37'W

AMES MUNI (AMW)  
RNAV (GPS) RWY 13

NC-3, 10 JUL 2025 to 07 AUG 2025