

WAAS
CH **72717**
W01A

APP CRS
014°

Rwy Ldg
TDZE
Apt Elev
5701
956
956

RNAV (GPS) RWY 1

AMES MUNI (AMW)

RNP APCH.

▼

✱ -26°C

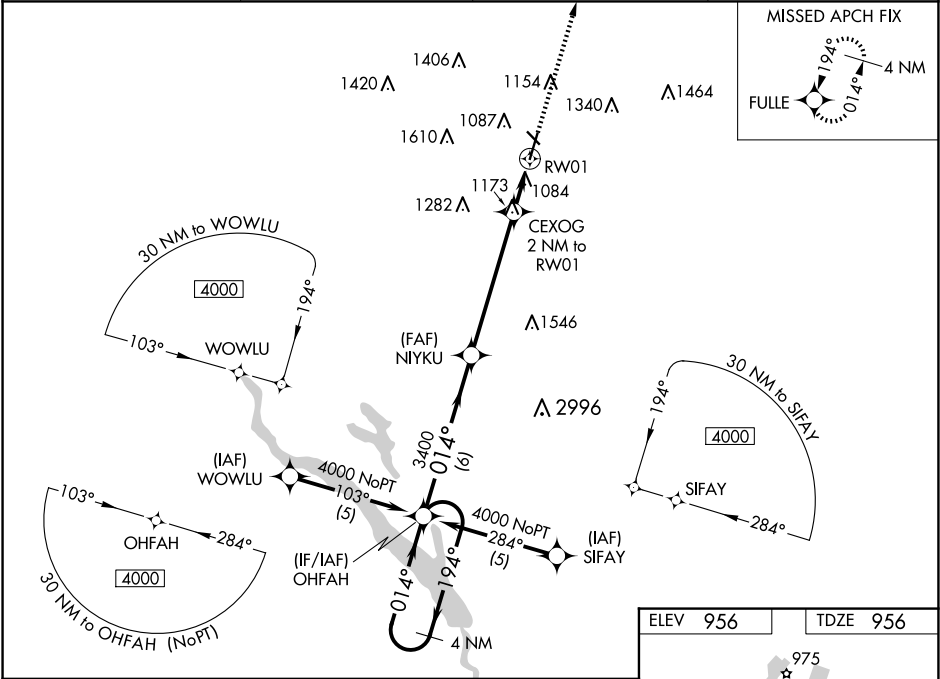
For uncompensated Baro-VNAV systems, LNAV/VNAV NA below -16°C (4°F) or above 54°C (130°F). For inop MALSR, increase LNAV Cats A, B visibility to 1 mile.

MALSR

AS

MISSED APPROACH: Climb to 3000 direct FULLE and hold.

| | | | |
|------------------------|---|--------------------------|--|
| ASOS 132.025 | DES MOINES APP CON 123.9 307.15 | CLNC DEL 126.0 | UNICOM 122.7 [CTAF] 0 |
|------------------------|---|--------------------------|--|



| | | | | | |
|----------------------|-----------------------|-----------------------|-----------------------|--------------------|------------|
| 4 NM Holding Pattern | | OHFAH | NIYKU | CEXOG 2 NM to RW01 | 3000 FULLE |
| 4000 ← 194° | | → 014° | → 014° | → 014° | → 014° |
| GP 3.00° | | 3400 | 3400 | *1.4 NM to RW01 | *1640 |
| TCH 50 | | 6 NM | 5.4 NM | 0.6 NM | 1.4 NM |
| CATEGORY | A | B | C | D | |
| LPV DA | 1261-3/4 | 305 (400-3/4) | | NA | |
| LNAV/VNAV DA | 1364-1 | 408 (500-1) | | NA | |
| LNAV MDA | 1440-3/4 | 484 (500-3/4) | | NA | |
| CIRCLING | 1440-1 484 (500-1) | 1460-1 504 (600-1) | 1640-2 684 (700-2) | NA | |

