

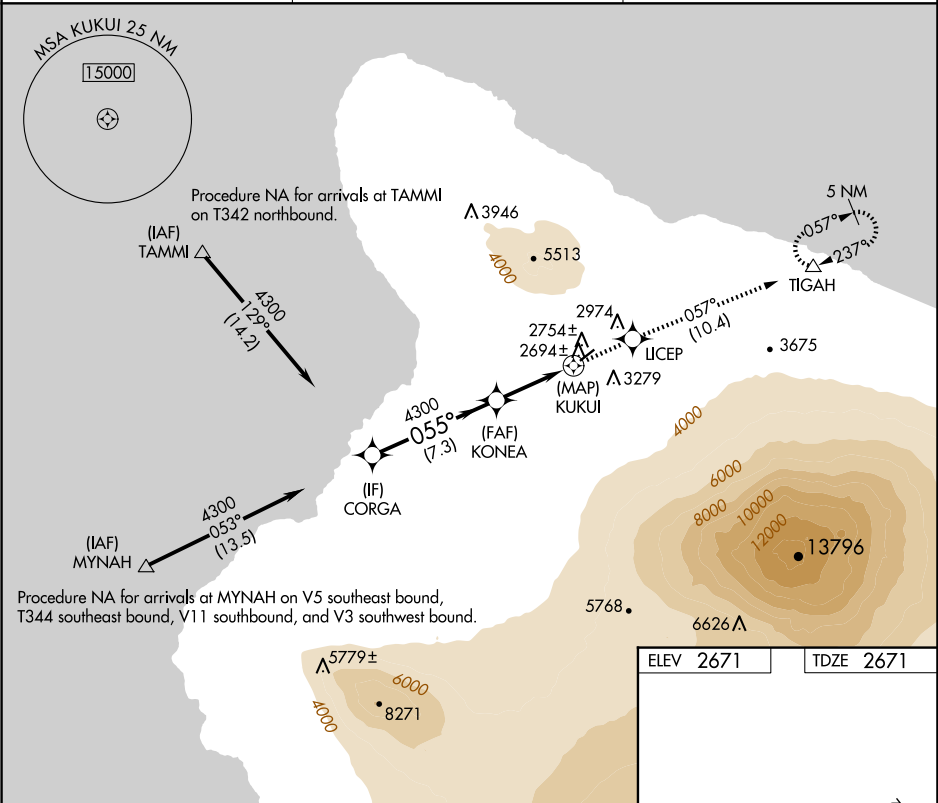
APP CRS	Rwy Idg	5197
055°	TDZE	2671
	Apt Elev	2671

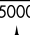
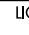


RNAV (GPS) RWY 4

WAIMEA-KOHALA (MUE)(PHMU)

RNP APCH - GPS.	MISSED APPROACH: Climb to 5000 direct UCEP and on track 057° to TIGAH and hold.
<div><div>▼</div><div>NA</div></div> Circling NA northwest of Rwy 4-22. When local altimeter setting not received, procedure NA.	

AWOS-3PT 120.0	HCF CENTER 118.45 278.3	CTAF 122.9
-------------------	----------------------------	---------------



VGSI and descent angles not coincident (VGSI Angle 2.50/TCH 43).				5000 	UCEP 	tr 057° 	TIGAH 
<p>CORGA</p> <p>4300 — 055° — 4300</p> <p>KONEA</p> <p>1.5 NM to KUKUI</p> <p>3.00° TCH 45</p> <p>7.3 NM</p> <p>3 NM</p> <p>1.5</p> <p>0.5</p>				<p>5197 X 100</p> <p>055°</p>			
CATEGORY	A	B	C		D		
LNAB MDA	3220-1	549 (600-1)	3220-1½		549 (600-1½)		
CIRCLING	3520-1¼	849 (900-1¼)	3620-2¾ 949 (1000-2¾)		3980-3 1309 (1400-3)		
				MIRL Rwy 4-22 REIL Rws 4 and 22			