

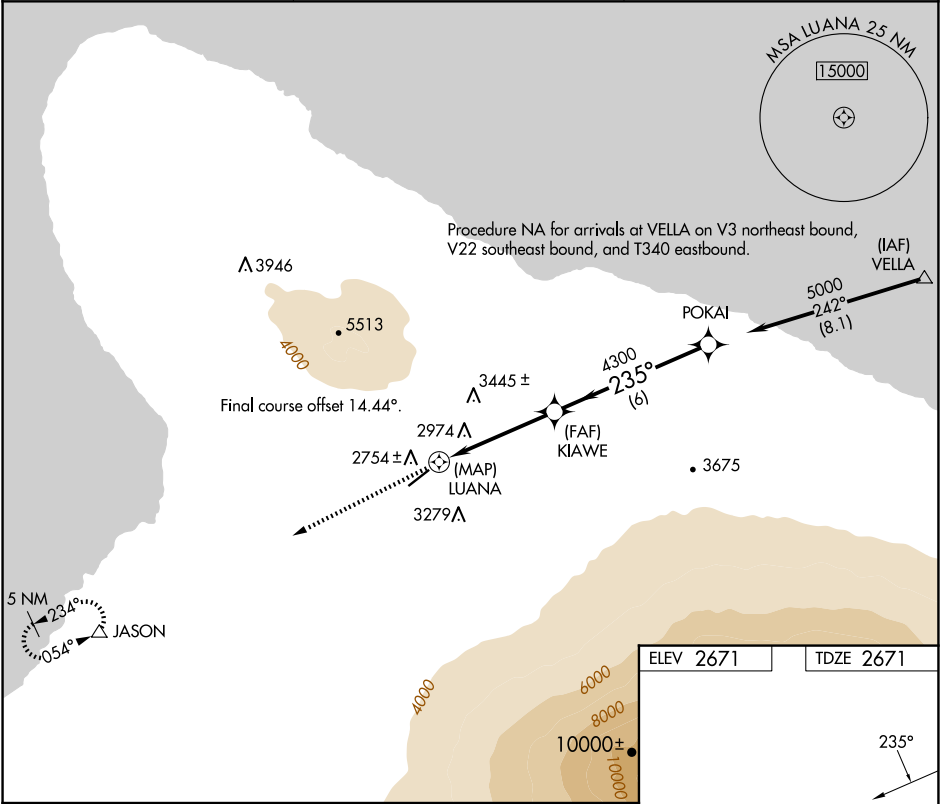
APP CRS	Rwy Idg	5197
235°	TDZE	2671
	Apt Elev	2671

RNAV (GPS) RWY 22

WAIMEA-KOHALA (MUE)(PHMU)

RNP APCH - GPS.	MISSED APPROACH: Climb to 5000 direct JASON and hold.
<div><div>▼</div><div>NA</div></div> Circling NA NW of Rwy 4-22. Rwy 22 helicopter visibility reduction below 1 SM NA. When local alimeter setting not received procedure NA.	

AWOS-3PT 120.0	HCF CENTER 118.45 278.3	CTAF 122.9 0
-------------------	----------------------------	-----------------



5000

JASON

VGSI and descent angles not coincident
(VGSI Angle 3.00/TCH 35).

↑

△

POKAI

LUANA

KIAWE

4300

235°

5000

3.00°

TCH 45

0.5

4.5 NM

6 NM

CATEGORY	A	B	C	D
RNAV MDA	3660-1¼ 989 (1000-1¼)	3660-1½ 989 (1000-1½)	3660-3 989 (1000-3)	989 (1000-3)
CIRCLING	3660-1¼ 989 (1000-1¼)	3660-1½ 989 (1000-1½)	3660-3 989 (1000-3)	3980-3 1309 (1400-3)

