

WAAS CH <b>78417</b> <b>W21A</b>	APP CRS <b>218°</b>	Rwy Idg TDZE Apt Elev	<b>4314</b> <b>1449</b> <b>1470</b>
--	------------------------	-----------------------------	---

RNAV (GPS) RWY 21

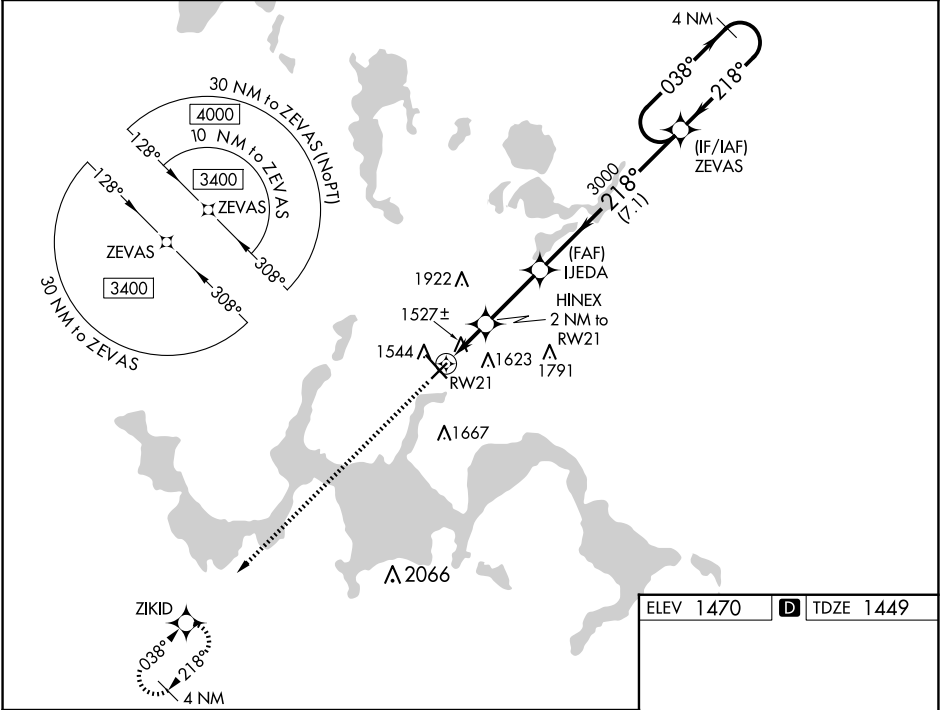
DEVILS LAKE RGNL (DVL)

⚠

For uncompensated Baro-VNAV systems, LNAV/VNAV NA below -17°C (2°F) or above 54°C (130°F). DME/DME RNP-0.3 NA. Helicopter visibility reduction below ¾ SM NA. Baro-VNAV NA when using Cando altimeter setting. VDP NA with Cando altimeter setting. When local altimeter setting not received, use Cando altimeter setting and increase all DA 63 feet, and all MDA 80 feet, increase LNAV and Circling Cats C and D visibility ¼ mile.

MISSED APPROACH: Climb to 3400 direct ZIKID and hold.

AWOS-3PT <b>125.875</b>	MINNEAPOLIS CENTER <b>124.2 270.3</b>	UNICOM <b>122.8 (CTAF)</b>
----------------------------	--	-------------------------------



3400

ZIKID

VGSI and RNAV glidepath not coincident (VGSI Angle 3.00/TCH 25).

\*LNAV only.

HINEX 2 NM to RW21

IJEDA 3000

ZEVS 4 NM Holding Pattern

038° → 3400

← 218°

218°

2120\*

3000

GP 3.00° TCH 50

1.1

0.9

2.7 NM

7.1 NM

CATEGORY	A	B	C	D
LPV DA		1699-1	250 (300-1)	
LNAV/VNAV DA		1699-1	250 (300-1)	
LNAV MDA		1800-1	351 (400-1)	
CIRCLING	2000-1	530 (600-1)	2240-2¼ 770 (800-2¼)	2240-2½ 770 (800-2½)

