

WAAS CH 78314 W13A	APP CRS 131°	Rwy Idg 6400 TDZE 1470 Apt Elev 1470
--	------------------------	---

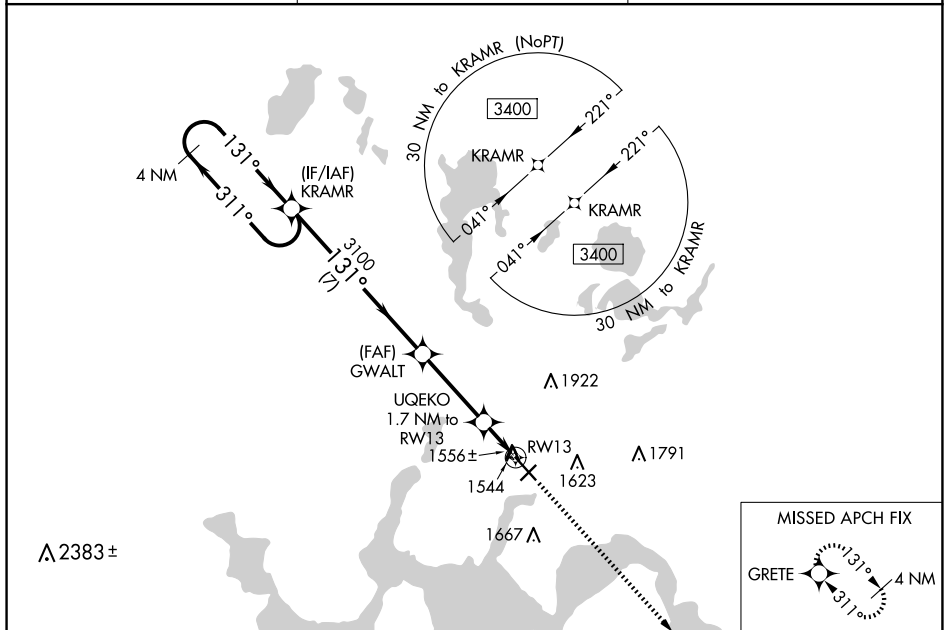
RNAV (GPS) RWY 13

DEVILS LAKE RGNL (DVL)

▼ For uncompensated Baro-VNAV systems, LNAV/VNAV NA below -17°C (2°F) or above 54°C (130°F). DME/DME RNP-0.3 NA. Baro-VNAV and VDP NA when using Cando altimeter setting. When local altimeter setting not received, use Cando altimeter setting and increase all DA 63 feet and all MDA 80 feet, increase LPV and LNAV/VNAV all. Cats visibility ¼ mile, LNAV and Circling Cats C and D visibility ½ mile.

MISSED APPROACH: Climb to 3400 direct GRETE and hold.

AWOS-3PT 125.875	MINNEAPOLIS CENTER 124.2 270.3	UNICOM 122.8 (CTAF) 0
----------------------------	--	---------------------------------



4 NM Holding Pattern

3400

GP 3.00° TCH 50

KRAMR

GWALT

3100

UQEKO 1.7 NM to RW13

*0.9 NM to RW13

*2060

7 NM

3.3 NM

0.8 NM

0.9 NM

3400 GRETE

131°

1500

6400 X 100

131°

1500

1472

1472

1472