

WAAS CH 56218 W30A	APP CRS 304°	Rwy Idg 5698 TDZE 2558 Apt Elev 2583
--	------------------------	---

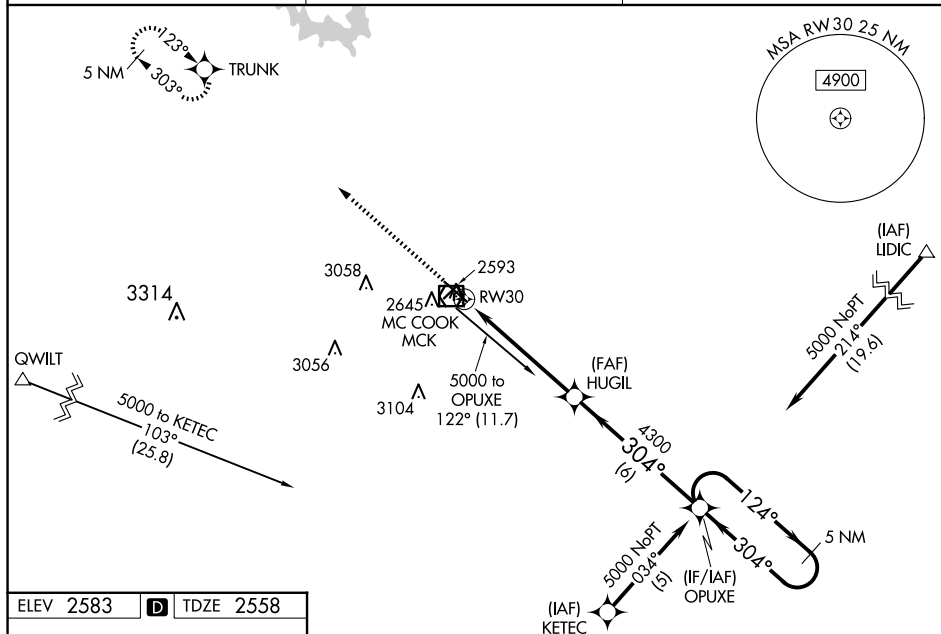
RNAV (GPS) RWY 30
MC COOK BEN NELSON RGNL (MCK)

RNP APCH-GPS.

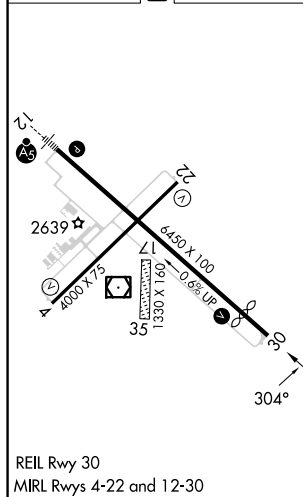
T When local altimeter setting not received, use Imperial Muni altimeter setting: increase LPV DA to 3023 feet, and all visibilities $\frac{1}{2}$ SM; increase LNAV/VNAV DA to 3079 feet and all visibilities $\frac{3}{8}$ SM; increase all MDA's 220 feet and visibility Cat C $\frac{3}{4}$ SM. Baro-VNAV and VDP NA when using Imperial Muni altimeter setting. Circling NA to Rwy's 17 and 35. For uncompensated Baro-VNAV systems, LNAV/VNAV NA below -20°C or above 54°C.

MISSED APPROACH: Climb to 5000 direct TRUNK and hold.

ASOS 119.025	DENVER CENTER 132.7 226.675	UNICOM 122.8 (CTAF) 0
------------------------	---------------------------------------	---------------------------------



ELEV 2583	D	TDZE 2558
-----------	----------	-----------



5000
↑
*LNAV only.

TRUNK
✦

5 NM Holding Pattern

HUGIL

OPUXE

124° → 5000
← 304°

304°

4300

RW30

1.2 NM to RW30

1.2 4.1 NM 6 NM

GP 3.00°
TCH 44

CATEGORY	A	B	C	D
LPV DA	2810-7/8	252 (300-7/8)		NA
LNAV/VNAV DA	2866-1	308 (300-1)		NA
LNAV MDA	2960-1	402 (400-1)	2960-1 1/8 402 (400-1 1/8)	NA
CIRCLING	3040-1 457 (500-1)	3120-1 537 (600-1)	3360-2 1/4 777 (800-2 1/4)	NA