

WAAS CH 50118 W12A	APP CRS 123°	Rwy Idg TDZE 2583 Apt Elev 2583
--	------------------------	---

RNAV (GPS) RWY 12

MC COOK BEN NELSON RGNL (MCK)

RNP APCH-GPS.

▼

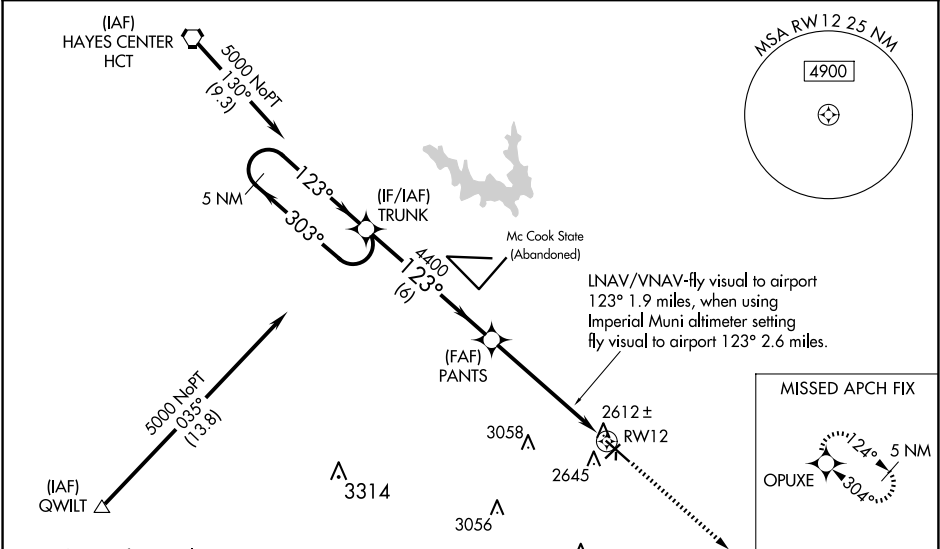
▲

Circling NA to Rwys 17 and 35. For uncompensated Baro-VNAV systems, LNAV/VNAV NA below -20°C or above 54°C. Baro-VNAV and VDP NA when using Imperial Muni altimeter setting. For inoperative MALSR, increase LPV all Cats visibility to 1, when using Imperial Muni altimeter setting increase LPV all Cats visibility to 1¾ and LNAV visibility Cat A to 1. Inoperative table does not apply to LNAV/VNAV. When local altimeter setting not received, use Imperial Muni altimeter setting and increase all DAs 213 feet, and LPV all Cats visibility ¾ mile, LNAV/VNAV Cat C visibility ½ mile; increase all MDAs 220 feet, and LNAV and Circling visibility Cats A and B ¼ mile, Cat C 1 mile.

MALSR

MISSED APPROACH:
Climb to 5000 direct
OPUXE and hold.

ASOS 119.025	DENVER CENTER 132.7 226.675	UNICOM 122.8 (CTAF)
------------------------	---------------------------------------	-------------------------------



Procedure NA for arrival at QWILT on V220 westbound.		5 NM Holding Pattern		LNNAV/VNAV-fly visual to airport 123° 1.9 miles, when using Imperial Muni altimeter setting fly visual to airport 123° 2.6 miles.		5000	OPUXE
GP 3.00° TCH 39		TRUNK		PANTS		*LNNAV only	
5000		303° 123°		123°		*1.8 NM to RWY12	
		6 NM		3.7 NM		1.8	
		4400					
CATEGORY		A	B	C	D		
LPV DA		2840-½ 257 (300-½)			NA		
LNNAV/VNAV DA		3240-2 657 (700-2)			NA		
LNNAV MDA		3180-½ 597 (600-½)		3180-1 597 (600-1)		NA	
CIRCLING		3180-1 597 (600-1)		3360-2¼ 777 (800-2¼)		NA	

