

LOC/DME I-MCK 110.95 Chan 46 (Y)	APP CRS 123°	Rwy Idg 5698 TDZE 2583 Apt Elev 2583
--	------------------------	---

ILS or LOC/DME RWY 12
MC COOK BEN NELSON RGNL (MCK)

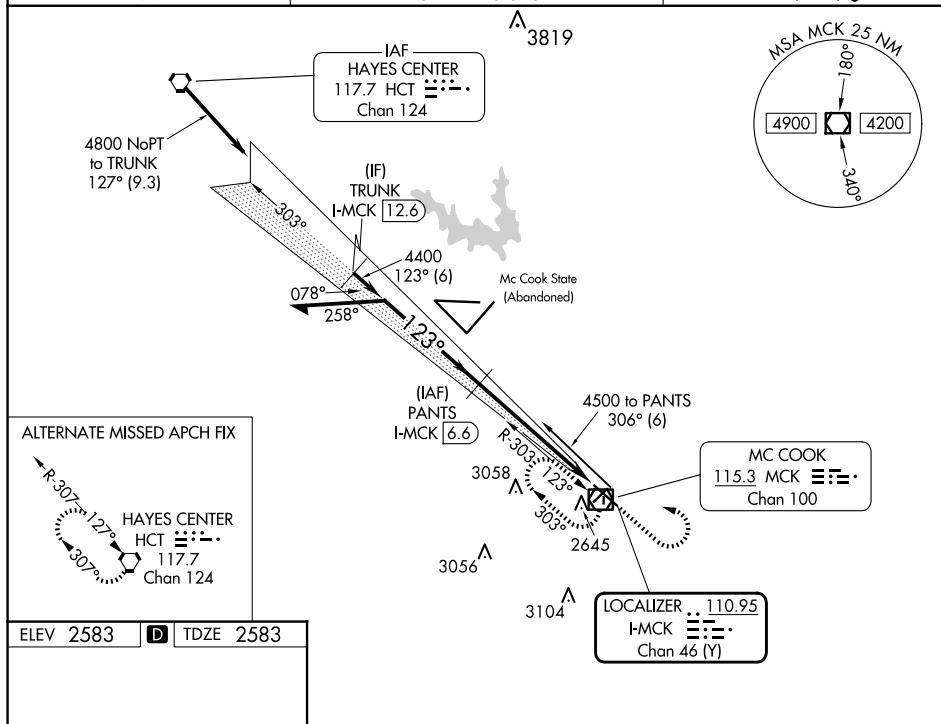
▲ Circling NA to Rwy's 17 and 35. When local altimeter setting not received, use Imperial Muni altimeter setting and increase DA 213 feet and S-ILS 12 all visibilities $\frac{1}{2}$ mile; increase all MDAs 220 feet and S-LOC 12 and Circling visibilities Cats A and B $\frac{1}{4}$ mile, Cat C 1 mile. VDP NA when using Imperial Muni altimeter setting. For inoperative MALSR, when using Imperial Muni altimeter setting increase S-ILS 12 all visibilities to $1\frac{1}{2}$, and S-LOC 12 Cat A visibility to 1.

MALSR



MISSED APPROACH:
Climb to 4500 then
climbing left turn to
5000 direct MCK
VOR/DME and hold.

ASOS 119.025	DENVER CENTER 132.7 226.675	UNICOM 122.8 (CTAF) L
------------------------	---------------------------------------	---------------------------------



REIL Rwy 30
MIRL Rws 4-22 and 12-30