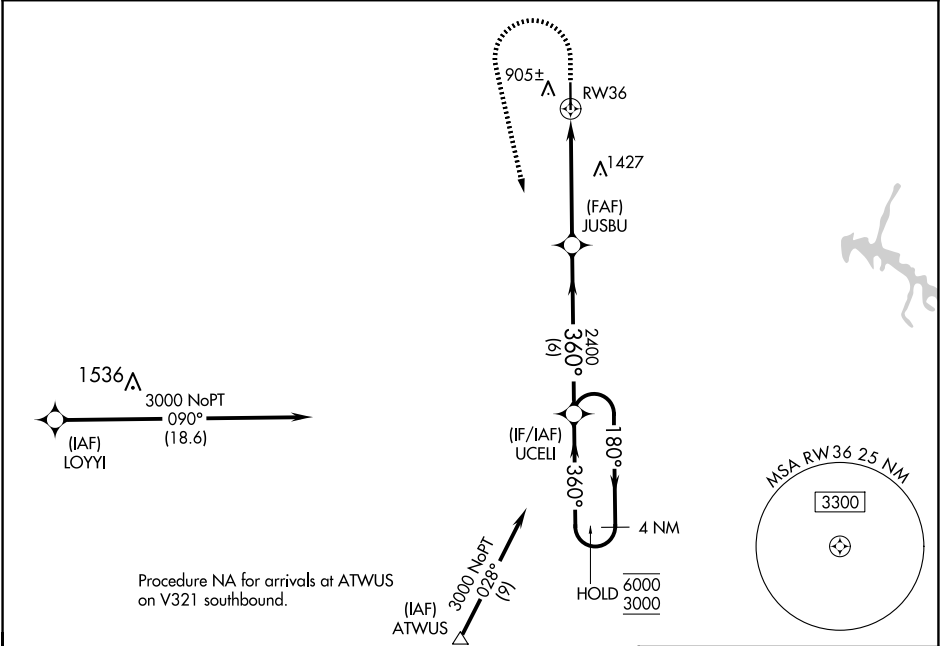


WAAS CH <b>97607</b> <b>W36A</b>	APP CRS <b>360°</b>	Rwy Idg TDZE Apt Elev	<b>5504</b> <b>800</b> <b>800</b>
----------------------------------------	------------------------	-----------------------------	-----------------------------------------

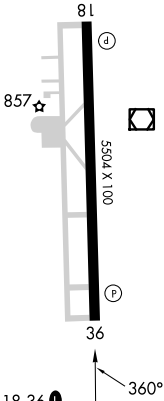
RNAV (GPS) Z RWY 36

BOMAR FLD/SHELBYVILLE MUNI (SYI)

RNP APCH - GPS.		MISSED APPROACH: Climb to 1800 then climbing left turn to 3000 direct UCELL and hold.
For uncompensated Baro-VNAV systems, LNAV/VNAV NA below -16°C or above 54°C.		
AWOS-3 <b>119.275</b>	MEMPHIS CENTER <b>128.15 323.125</b>	UNICOM <b>122.8 (CTAF) 0</b>



4 NM Holding Pattern		VGSI and RNAV glidepath not coincident (VGSI Angle 3.00/TCH 30).		ELEV 800	TDZE 800
6000 180° 3000 360°		JUSBU 2400 1.5 NM to RW36		1800 3000 UCELL	
GP 3.00° TCH 51		RW36			
6 NM		3.4 NM		1.5 NM	
CATEGORY	A	B	C	D	
LPV DA	1000-3/4		200 (200-3/4)		
LNAV/VNAV DA	1211-1 1/8		411 (500-1 1/8)		
LNAV MDA	1300-1 500 (500-1)		1300-1 3/8 500 (500-1 3/8)		
CIRCLING	1300-1 500 (500-1)		1360-1 560 (600-1)		
		1780-3 980 (1000-3)			



SE-1, 10 JUL 2025 to 07 AUG 2025

SE-1, 10 JUL 2025 to 07 AUG 2025