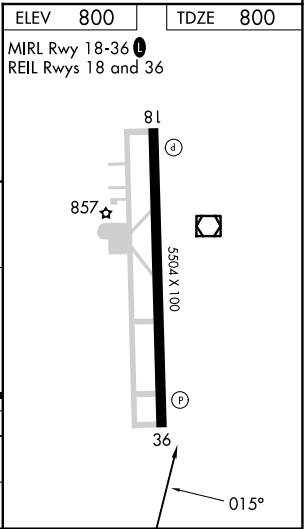
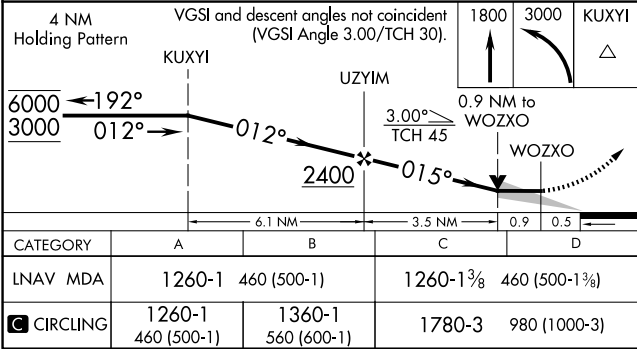
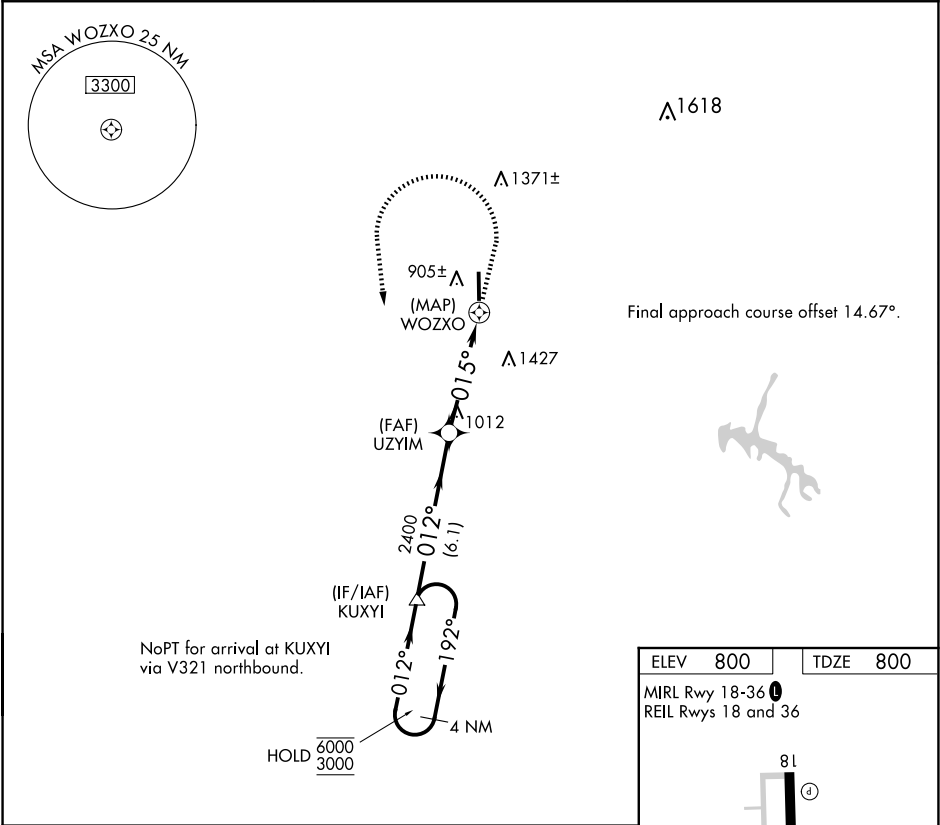


APP CRS	Rwy Idg	5504
015°	TDZE	800
	Apt Elev	800

RNAV (GPS) Y RWY 36  
BOMAR FLD/SHELBYVILLE MUNI (SYI)

RNP APCH - GPS.	MISSED APPROACH: Climb to 1800 then climbing left turn to 3000 direct KUXYI and hold.
-----------------	---

AWOS-3 119.275	MEMPHIS CENTER 128.15 323.125	UNICOM 122.8 (CTAF) 0
-------------------	----------------------------------	--------------------------



SE-1, 10 JUL 2025 to 07 AUG 2025

SE-1, 10 JUL 2025 to 07 AUG 2025