


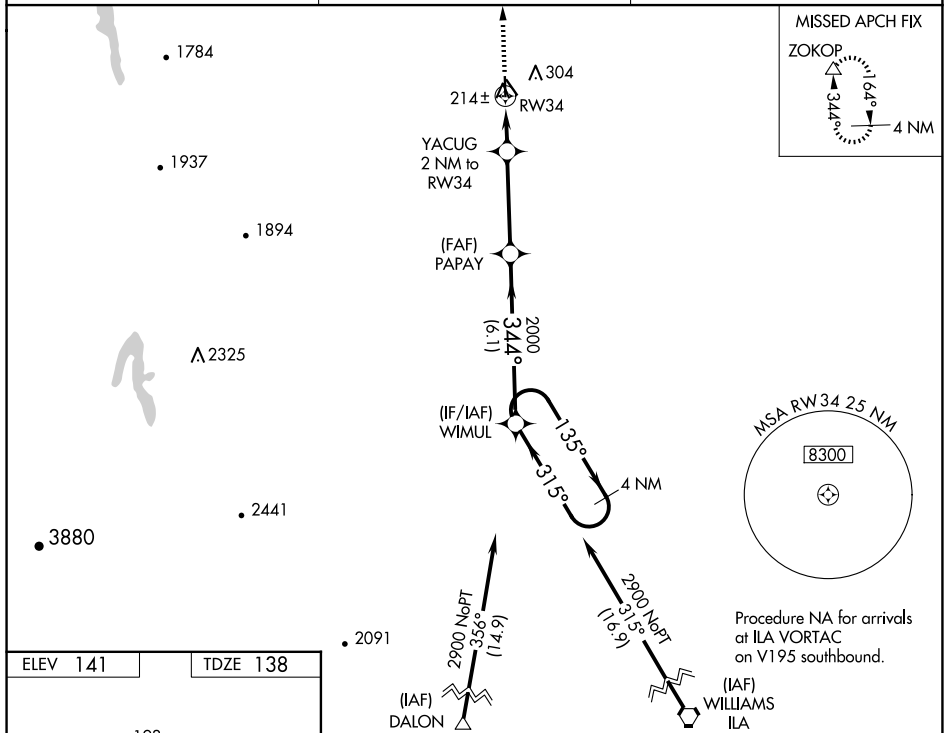
WAAS CH <b>78422</b> <b>W34A</b>	APP CRS <b>344°</b>	Rwy Idg <b>4125</b> TDZE <b>138</b> Apt Elev <b>141</b>
--	------------------------	---

# RNAV (GPS) RWY 34

## WILLOWS/GLENN COUNTY (WLW)

 NA	When Oroville Muni altimeter setting not received, procedure NA. Baro-VNAV NA. DME/DME RNP-0.3 NA. Use Oroville altimeter setting.	MISSED APPROACH: Climb to 3000 direct ZOKOP and hold.
--	---	---

OVE ASOS <b>121,425</b>	OAKLAND CENTER <b>132.2 350.3</b>	UNICOM <b>122.8</b> (CTAF) <b>0</b>
----------------------------	--------------------------------------	--



The diagram illustrates the RW34 approach procedure. It shows a vertical segment of 4125 x 100 feet, followed by a 34° turn. The final segment is 3788 x 60 feet, ending at a 34° angle. The approach is for RW34, with a 2 NM segment, a 3.7 NM segment, and a 6.1 NM segment. The approach is for RW34, with a 2 NM segment, a 3.7 NM segment, and a 6.1 NM segment. The approach is for RW34, with a 2 NM segment, a 3.7 NM segment, and a 6.1 NM segment.

CATEGORY	A	B	C	D
LPV DA	460-1 $\frac{1}{8}$	322 (400-1 $\frac{1}{8}$ )		NA
LNNAV/VNAV DA	460-1 $\frac{1}{8}$	322 (400-1 $\frac{1}{8}$ )		NA
LNNAV MDA	540-1	402 (400-1)	540-1 $\frac{1}{8}$ 402 (400-1 $\frac{1}{8}$ )	NA
<b>C</b> CIRCLING	680-1	539 (600-1)	680-1 $\frac{1}{2}$ 539 (600-1 $\frac{1}{2}$ )	NA