

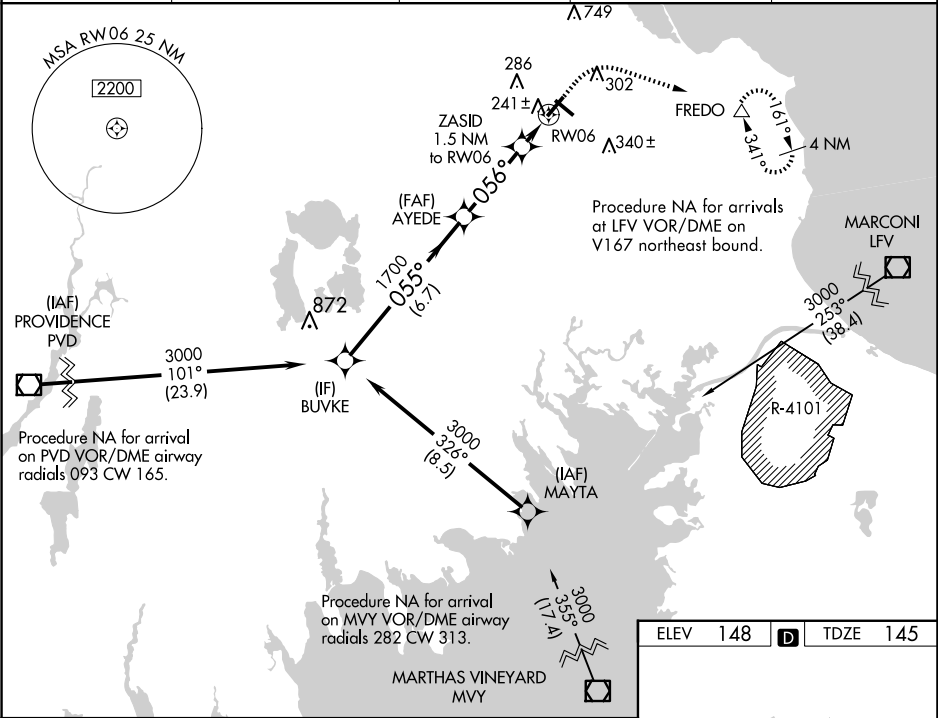
WAAS CH 40422 W06A	APP CRS 056°	Rwy Idg 4650 TDZE 145 Apt Elev 148
--	------------------------	---

RNAV (GPS) RWY 6

PLYMOUTH MUNI (PYM)

RNP APCH - GPS. ▼ Circling Rwy 15 NA at night. Rwy 6 helicopter visibility reduction below ¾ SM NA. ▲ For uncompensated Baro-VNAV systems, LNAV/VNAV NA below -17°C or above 54°C. For inop ALS, increase LPV all Cats visibility to ¾ SM and LNAV/VNAV all Cats visibility to ½ SM.	MALSF ☯	MISSED APPROACH: Climb to 640 then climbing right turn to 1900 direct FREDO and hold.
---	------------	--

ASOS 135.625	BOSTON APP CON 118.2 284.6	CLNC DEL 127.75	UNICOM 122.725 (CTAF)	122.9 ①
------------------------	--------------------------------------	---------------------------	---------------------------------	----------------



VGSI and RNAV glidepath not coincident (VGSI Angle 3.00/TCH 40).					640	1900	FREDO	
<p>The diagram illustrates the approach procedure for runway 06. It shows a vertical line for BUVKE at 3000 feet, a vertical line for AYEDÉ at 1700 feet, and a vertical line for ZASID at 1.5 NM to RW06. The glidepath starts at 3000 feet and descends at 055° to 1700 feet, then continues at 056° to the runway. The distance from BUVKE to AYEDÉ is 6.7 NM, from AYEDÉ to ZASID is 3.3 NM, and from ZASID to RW06 is 1.5 NM. The runway is labeled RW06. A GP 3.00° TCH 50 is indicated. A legend shows a straight arrow for 640 and a curved arrow for 1900, with a triangle symbol for FREDO.</p>								
					A	B	C	D
LPV	DA	436-¾		291 (300-¾)				NA
LNAV/ VNAV	DA	426-¾		281 (300-¾)				NA
LNAV	MDA	500-¾		355 (400-¾)				NA
CIRCLING		620-1 472 (500-1)	640-1 492 (500-1)	760-1¾ 612 (700-1¾)				NA

