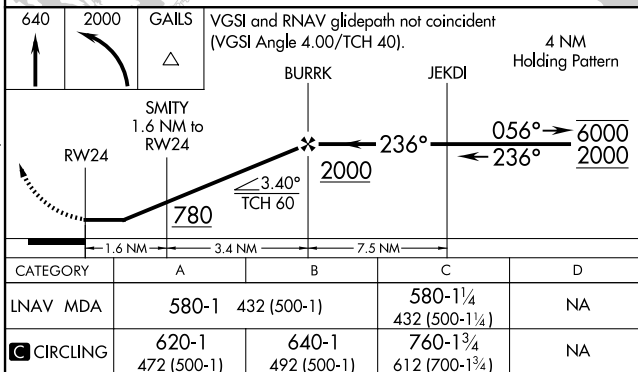
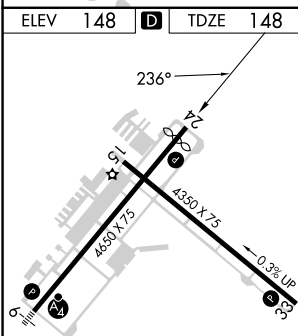
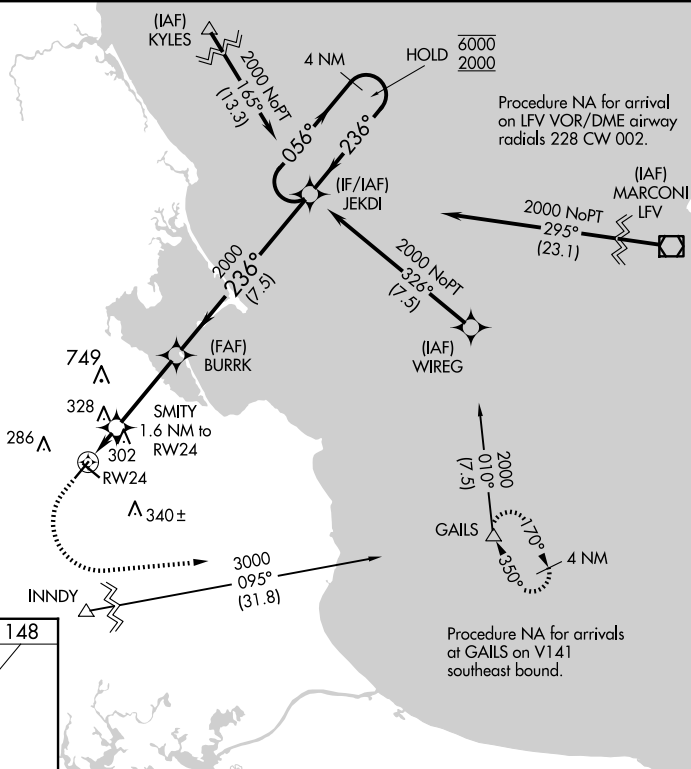
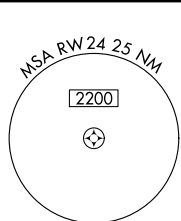


RNAV (GPS) RWY 24
PLYMOUTH MUNI (PYM)

T
A Rwy 24 helicopter visibility reduction below 1 SM NA.
Circling Rwy 15 NA at night.

MISSED APPROACH: Climb to 640 then climbing left turn to 2000 direct GALS and hold.

122.9 L



REIL Rwy 24 **L**
MIRL Rwy 6-24 and 15-33 **L**

PLYMOUTH, MASSACHUSETTS
Orig-E 31OCT24

41°55'N-70°44'W

PLYMOUTH MUNI (PYM)
RNAV (GPS) RWY 24

NE-1, 10 JUL 2025 to 07 AUG 2025