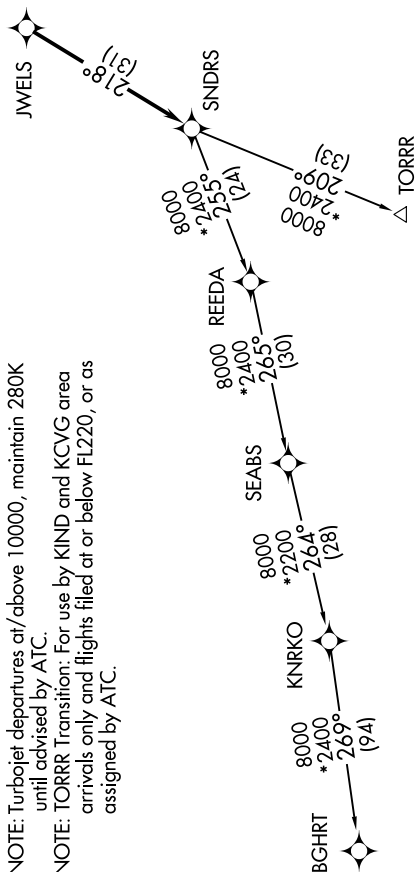


DEPARTURE ROUTE DESCRIPTION	TOP ALTITUDE: ASSIGNED BY ATC	DETROIT DEP CON
TAKEOFF RUNWAY 10: Climb on heading 096° to 1400 then as assigned by ATC, thence....	RNAV-1 DME/DME/IRU or GPS.	132.35 284.0 AWOS-3 119.475 CTAF 123.05
TAKEOFF RUNWAY 28: Climb on heading 276° to 1500 then as assigned by ATC, thence....	RADAR required.	
<p>.....for RADAR vectors to JWELS, then on track 218° to SNDRS, then on (transition). Maintain ATC assigned altitude, expect filed altitude 10 minutes after departure.</p> <p>BGHR T TRANSITION (SNDRS3.BGHR T): TORRR TRANSITION (SNDRS3.TORRR):</p>		



NOTE: Chart not to scale.