

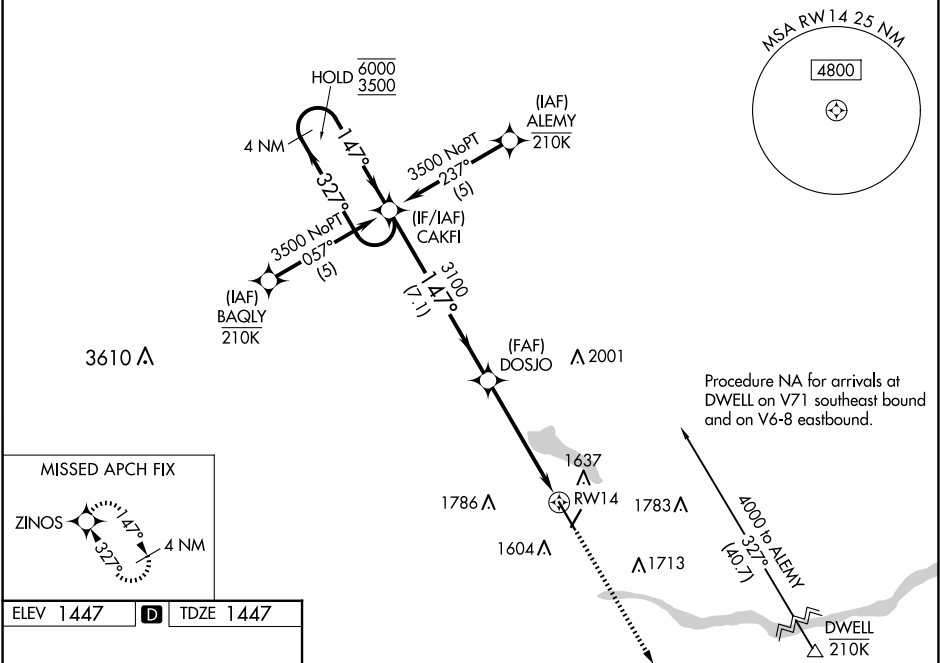
WAAS CH 60910 W14A	APP CRS 147°	Rwy Idg TDZE Apt Elev	6260 1447 1447
--	------------------------	-----------------------------	---

RNAV (GPS) RWY 14

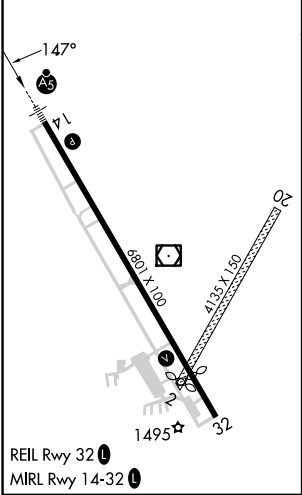
COLUMBUS MUNI (OLU)

RNP APCH - GPS.	MALSR	MISSED APPROACH: Climb to 4000 direct ZINOS and hold.
<div><div><div><div></div><div></div></div><div><div></div><div></div></div></div><div><div><div></div><div></div></div><div><div></div><div></div></div></div><div><div><div></div><div></div></div><div><div></div><div></div></div></div></div> <div>Circling NA to Rwys 2 and 20. Rwy 14 helicopter visibility reduction below ¾ SM NA. For uncompensated Baro-VNAV systems, LNAV/VNAV NA below -23°C or above 54°C. For inop ALS, increase LPV all Cats visibility to ¾ SM.</div>	<div><div><div></div><div></div></div><div><div></div><div></div></div></div>	

AWOS-3PT 125.525	MINNEAPOLIS CENTER 128.75 346.3	UNICOM 123.05 (CTAF) 0
----------------------------	---	----------------------------------



ELEV 1447	D	TDZE 1447
------------------	----------	------------------



4000

↑

ZINOS

✧

4 NM Holding Pattern

CAKFI

DOSJO

6000

3500

←327°

147°→

147°

3100

1.7 NM to RW14

RW14

GP 3.00°

TCH 40

7.1 NM

3.4 NM

1.7 NM

CATEGORY	A	B	C	D
LPV DA	1750-¾ 303 (400-¾)			
LNAV/VNAV DA	1840-¾ 393 (400-¾)			
LNAV MDA	2020-¾ 573 (600-¾)	2020-1¼ 573 (600-1¼)		
CIRCLING	2020-1 573 (600-1)	2100-1¾ 653 (700-1¾)	2100-2 653 (700-2)	