

WAAS  
CH **86613**  
**W18A**

APP CRS  
**183°**

Rwy Idg  
TDZE **3695**  
Apt Elev **3706**

**RNAV (GPS) RWY 18**

SOUTHEAST COLORADO RGNL (LAA)

RNP APCH.

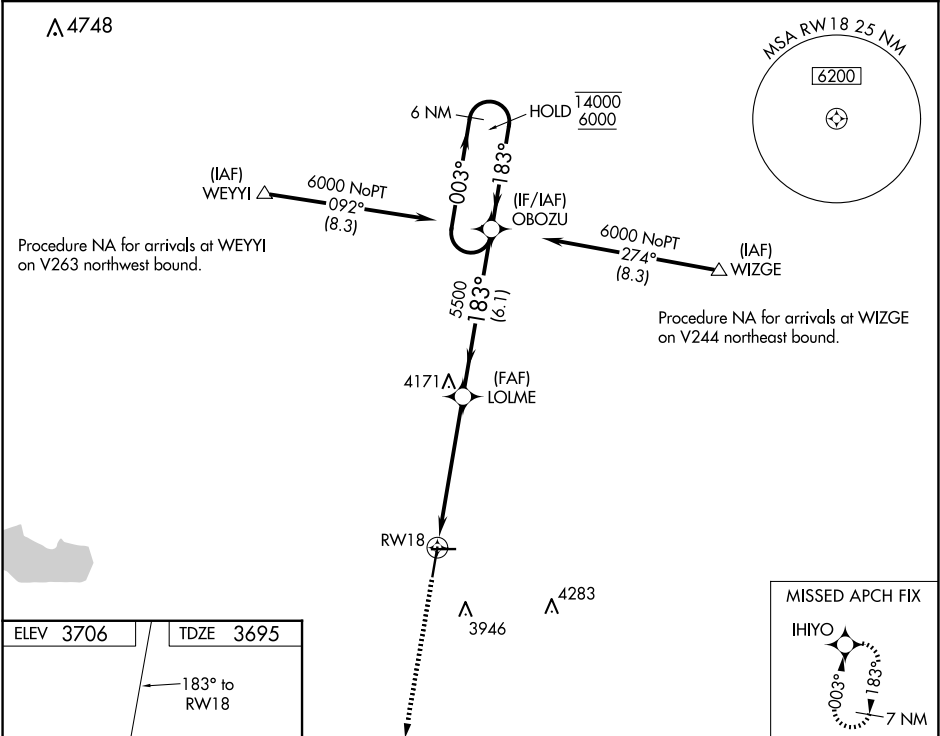
▼

▲

For uncompensated Baro-VNAV systems, LNAV/VNAV NA below -22°C or above 54°C.

MISSED APPROACH: Climb to 6200 direct IHIYO and hold.

ASOS <b>135.625</b>	DENVER CENTER <b>133.4 377.175</b>	UNICOM <b>122.8 (CTAF) 1</b>
------------------------	---------------------------------------	---------------------------------



6200

IHIYO

VGSI and RNAV glidepath not coincident (VGSI Angle 3.00/TCH 45).

\*LNAV only.

1.7 NM to RW18

RW18

LOLME

5500

OBOZU

6 NM Holding Pattern

003°

183°

14000  
6000

GP 3.05°  
TCH 41

1.7 NM

3.8 NM

6.1 NM

CATEGORY	A	B	C	D
LPV DA	3945-1 250 (300-1)			
LNAV/VNAV DA	4014-1¼ 319 (400-1¼)			
LNAV MDA	4260-1 565 (600-1)		4260-1½ 565 (600-1½)	

SW-1, 10 JUL 2025 to 07 AUG 2025

SW-1, 10 JUL 2025 to 07 AUG 2025