

WAAS CH <b>60902</b> <b>W17A</b>	APP CRS <b>171°</b>	Rwy ldg TDZE Apt Elev	<b>5500</b> <b>383</b> <b>390</b>
--	------------------------	-----------------------------	---

RNAV (GPS) RWY 17

LEESBURG EXEC (JYO)

RNP APCH - GPS.

▼

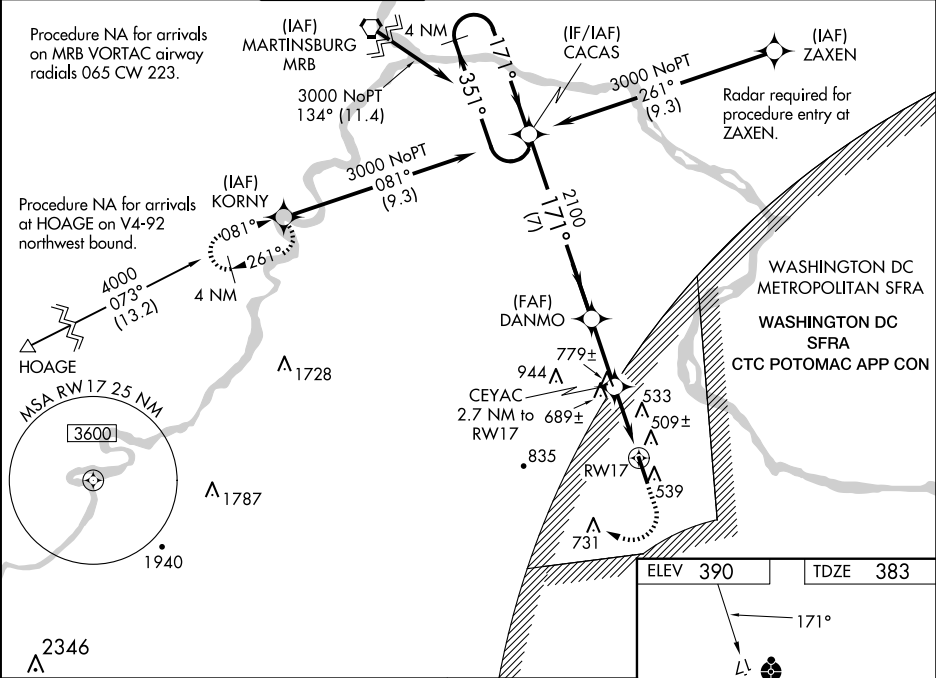
▲

For uncompensated Baro-VNAV systems, LNAV/VNAV NA below -15°C or above 41°C.  
When local altimeter setting not received, use Washington Dulles Intl altimeter setting:  
increase LPV DA to 665 feet; increase LNAV/VNAV DA to 757 feet and increase all visibilities ½ SM; increase all MDA 40 feet and visibility LNAV Cat C/D and Circling Cat C ¼ SM.  
Inop table does not apply to LPV all Cats. For inop ALS when using Washington Dulles Intl altimeter setting, increase visibility LPV Cats A/B to ¾ SM and inop table does not apply to LNAV/VNAV all Cats. Baro-VNAV NA when using Washington Dulles Intl altimeter setting.  
For inop ALS, increase visibility LNAV/VNAV Cats A/B to 1 and LNAV Cats C/D to 1½.

ODALS

MISSED APPROACH:  
Climb to 1100 then  
climbing right turn to  
4000 direct KORNÝ  
and hold.

AWOS-3 <b>125.225</b>	POTOMAC APP CON <b>125.05 338.25</b>	LEESBURG TOWER ★ <b>127.5</b> (CTAF) <b>0</b>	GND CON <b>120.5</b>	CLNC DEL <b>120.5</b>	CLNC DEL <b>118.55</b> (When twr closed)	UNICOM <b>122.975</b>
--------------------------	---	--	-------------------------	--------------------------	---	--------------------------



4 NM Holding Pattern

CACAS

DANMO

CEYAC 2.7 NM to RWY 17

RWY 17

GP 3.00° TCH 45

3000

351°

171°

2100

1280

7 NM

2.6 NM

2.7 NM

1100

4000

KORNÝ

5500 x 100

35

CATEGORY	A	B	C	D
LPV DA		633-¾	250 (300-¾)	
LNAV/VNAV DA		725-⅞	342 (400-⅞)	
LNAV MDA	940-¾ 557 (600-¾)		940-1⅜ 557 (600-1⅜)	
CIRCLING	940-1 550 (600-1)	1040-1¾ 650 (700-1¾)	1300-3 910 (1000-3)	

REIL Rwy 17 and 35

HIRL Rwy 17-35