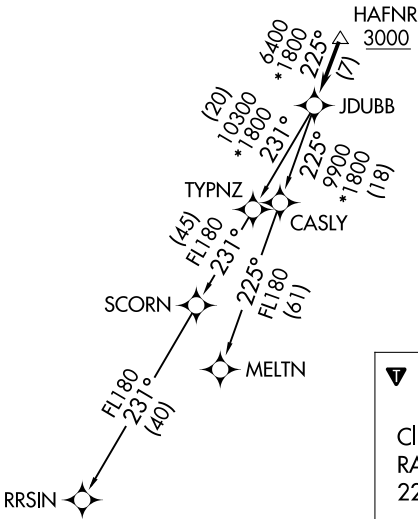
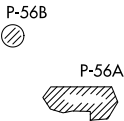


AWOS-3  
125.225  
CLNC DEL  
120.5  
118.55 (When twr closed)  
GND CON  
120.5  
LEESBURG TOWER ★  
127.5 (CTAF)  
UNICOM  
122.975  
POTOMAC DEP CON  
125.05 350.2

TOP ALTITUDE:  
3000

TAKEOFF MINIMUMS:  
Rwys 17, 35: Standard

- NOTE: RNAV 1.  
NOTE: RADAR required.  
NOTE: DME/DME/IRU or GPS required.  
NOTE: Turbo-jets only.  
NOTE: Takeoff Rwy 35 requires a climb to 1200 on heading 353° before proceeding on the ATC assigned heading for obstacle avoidance.



NOTE: Chart not to scale.

DEPARTURE ROUTE DESCRIPTION

Climb on heading assigned by ATC, expect RADAR vectors to HAFNR, then on track 225° to JDUBB, thence. . . .  
. . . . on assigned transition, maintain 3000, expect clearance to filed altitude within ten (10) minutes after departure.

MELTN TRANSITION (JDUBB4.MELTN)  
RRSIN TRANSITION (JDUBB4.RRSIN)