

LOC/DME I-JYO	APP CRS	Rwy Ldg	5500
111.75	171°	TDZE	383
Chan 54 (Y)		Apt Elev	390

ILS or LOC RWY 17

LEESBURG EXEC (JYO)

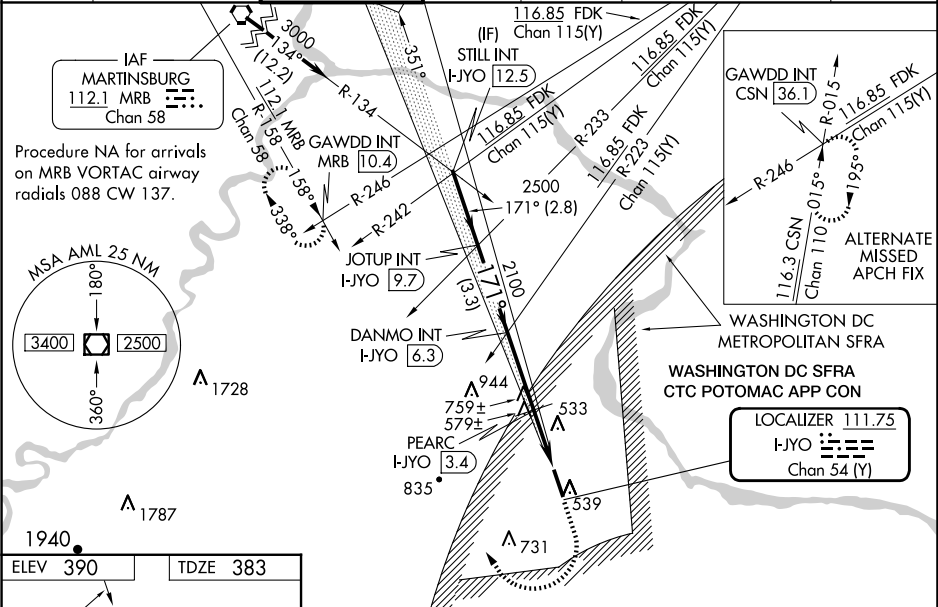
NA

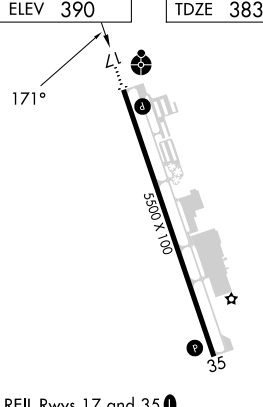
Inop table does not apply to S-ILS 17 all Cats and S-LOC 17 Cats C/D. For inop ALS when using Washington Dulles Intl altimeter setting, increase visibility S-ILS 17 Cats A/B to ¾ SM and inop table does not apply to S-LOC 17 Cats C/D. When local altimeter setting not received, use Washington Dulles Intl altimeter setting: increase S-ILS 17 DA to 665 feet; increase all MDA 40 feet and visibility S-LOC 17 Cat A and Circling Cat C ¼ SM and PEARC fix minimums S-LOC 17 Cat C/D ½ SM and Circling Cat C ¼ SM. For inop ALS, increase PEARC fix minimums S-LOC 17 Cats C/D visibility to 1¾.

ODALS

MISSED APPROACH: Climb to 1200 then climbing right turn to 4000 on heading 340° and MRB VORTAC R-158 to GAWDD INT/MRB 10.4 DME and hold, continue climb-in hold to 4000.

AWOS-3	POTOMAC	APP CON	LEESBURG TOWER ★	GND CON	CLNC DEL	CLNC DEL	UNICOM
125.225	125.05	338.25	127.5 (CTAF) 0	120.5	120.5	118.55 (When twr closed)	122.975



ELEV	390	TDZE	383		
 <p>The diagram shows a perspective view of Runway 17-35. At the top left, a box contains 'ELEV 390'. An arrow points from this box to the runway's start, with '171°' written next to it. At the top right, a box contains 'TDZE 383'. Along the runway, there are several markers: a '500' marker, a '100' marker, and a '35' marker. A star symbol is located near the '35' marker. The runway is labeled '17-35' in the center.</p>					
REIL Rws 17 and 35 L					
HIRL Rwy 17-35 L					
FAF to MAP 5.3 NM					
Knots	60	90	120	150	180
Min:Sec	5:18	3:32	2:39	2:07	1:46

STILL INT I-JYO	12.5	JOTUP INT I-JYO	9.7	DANMO INT I-JYO	6.3	PEARC I-JYO	3.4	I-JYO	1.1
3000	171°	2500	2100	*1240					
GS 3.00°	TCH 45								
2.8 NM	3.3 NM	2.9 NM	2.3 NM						
CATEGORY	A	B	C	D					
S-ILS 17		633-¾	250 (300-¾)						
S-LOC 17	1240-¾	1240-1	1240-2½	857 (900-2½)					
	857 (900-¾)	857 (900-1)							
CIRCLING	1240-1¼	850 (900-1¼)	1240-2½	1300-3					
			850 (900-2½)	910 (1000-3)					
PEARC FIX MINIMUMS									
S-LOC 17	840-¾	457 (500-¾)	840-1½	457 (500-1½)					
CIRCLING	860-1	470 (500-1)	1040-1¾	1300-3					
			650 (700-1¾)	910 (1000-3)					