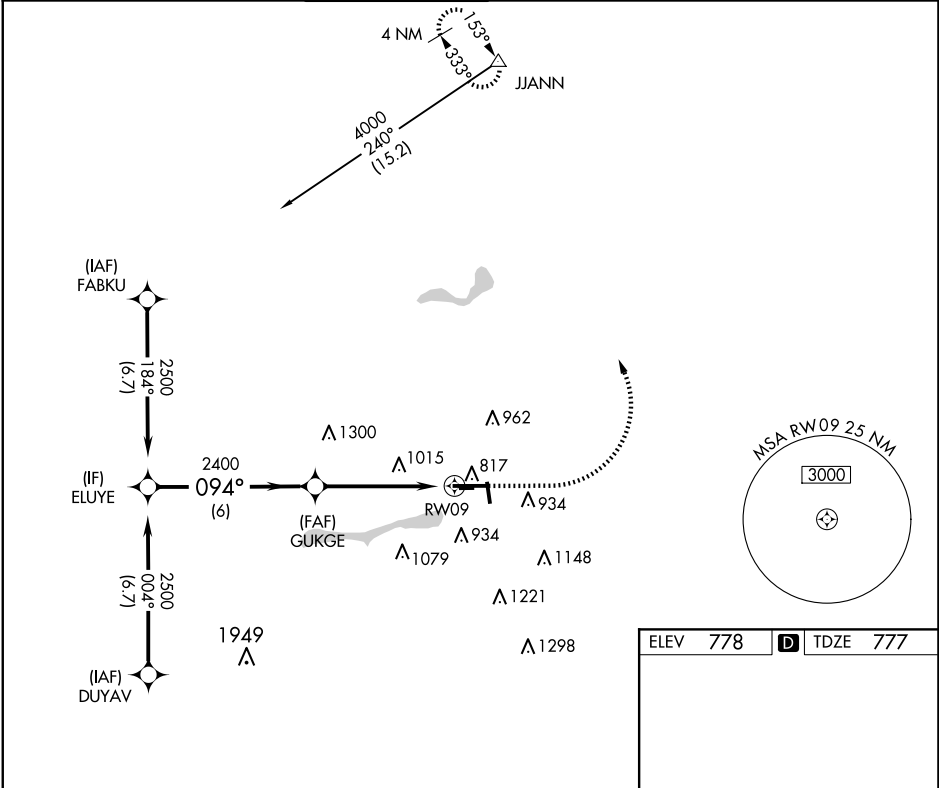


APP CRS	Rwy Ldg	6500
094°	TDZE	777
	Apt Elev	778

RNAV (GPS) RWY 9  
ELKHART MUNI (EKM)

RNP APCH - GPS.					MISSED APPROACH: Climb to 1500 then climbing left turn to 4000 direct JJANN and hold.	
▼ Circling NA to Rws 8 and 26. Circling Rwy 36 NA at night. Rwy 9 helicopter visibility reduction below ¾ SM NA. VDP NA when using SBN altimeter setting. When local altimeter setting not received, use SBN altimeter setting: increase all MDAs 40 feet and LNAV visibility Cat C/D ¼ SM, and Circling visibility Cat D ¼ SM.						
AWOS-3	SOUTH BEND APP CON ★	ELKHART TOWER ★	GND CON	CLNC DEL	CLNC DEL	UNICOM
124.475	118.55 257.8	119.5 (CTAF) 0	121.8	121.8	119.7 (When twr closed)	122.95



--	--	--	--

