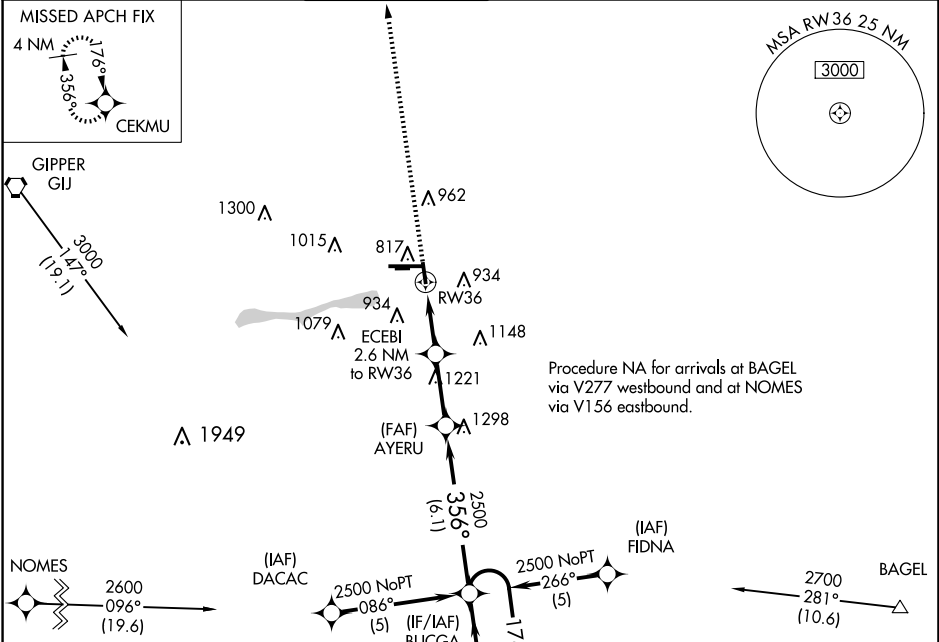


APP CRS	Rwy Ldg	3999
356°	TDZE	776
	Apt Elev	778

RNAV (GPS) RWY 36
ELKHART MUNI (EKM)

RNP APCH.						MISSED APPROACH: Climb to 2500 direct CEKMU and hold.	
When local altimeter setting not received, use South Bend altimeter setting and increase all MDA 40 feet. Straight-in and Circling Rwy 36 NA at night. Rwy 36 helicopter visibility reduction below 1 SM NA. Circling NA to Rwy's 8 and 26.							
AWOS-3	SOUTH BEND APP CON ★		ELKHART TOWER ★	GND CON	CLNC DEL	CLNC DEL	UNICOM
124.475	118.55 257.8		119.5 (CTAF) 0	121.8	121.8	119.7 (When twr closed)	122.95



<div><div>2500</div><div>CEKMU</div></div> <div><div>VGSI and descent angles not coincident (VGSI Angle 4.00/TCH 57).</div><div><div>RW36</div><div>2.6 NM</div><div>2.6 NM</div><div>6.1 NM</div></div></div>		<div><div>ECEBI 2.6 NM to RW36</div><div>AYERU</div><div>BUCGA</div></div> <div><div>4 NM Holding Pattern</div><div>356°</div><div>176°</div><div>356°</div></div>		
CATEGORY	A	B	C	D
RNAV MDA	1220-1	444 (500-1)	1220-1¼ 444 (500-1¼)	1220-1½ 444 (500-1½)
CIRCLING	1240-1 462 (500-1)	1300-1 522 (600-1)	1380-1¾ 602 (700-1¾)	1580-2½ 802 (900-2½)

