

ILS or LOC RWY 27  
ELKHART MUNI (EKM)

RADAR required for procedure entry.

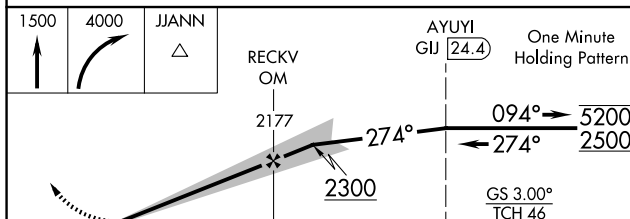
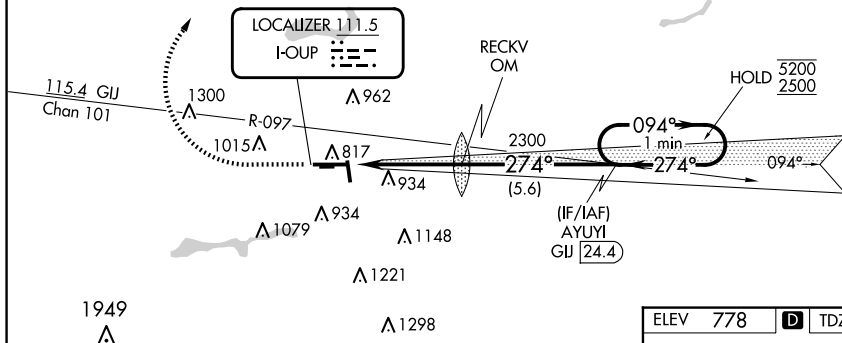
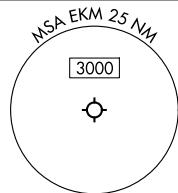
**A** Circling NA to Rwy 8 and 26. Rwy 27 helicopter visibility reduction below RVR 4000 NA. Circling Rwy 18 and 36 NA at night. When local altimeter setting not received, use SBN altimeter setting and increase S-LS 27 DA to 1100 feet, increase all MDAs 40 feet, and S-LOC 27 visibility Cat C/D to RVR 5500, and Circling visibility Cat D ½ SM. For inop ALS, increase S-LS 27 all Cats visibility to RVR 4500 and S-LOC 27 Cat A/B visibility to 5500 and Cat C/D visibility to 1 ½ SM. For inop ALS when using SBN, increase S-LOC 27 Cat A/B visibility to RVR 5500, and Cat C/D visibility to 1 ½ SM.


MALSr

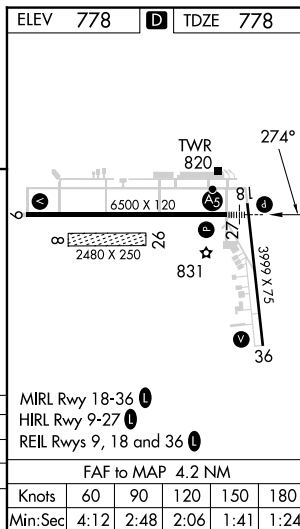
**MISSED APPROACH:**  
Climb to 1500 then  
climbing right turn to  
4000 direct JJANN  
and hold.

AWOS-3 <b>124.475</b>	SOUTH BEND APP CON ★ <b>118.55 257.8</b>	ELKHART TOWER ★ <b>119.5 (CTAF) 0</b>	GND CON <b>121.8</b>	CLNC DEL <b>121.8</b>	CLNC DEL <b>119.7</b> (When twr closed)	UNICOM <b>122.95</b>
--------------------------	---	--	-------------------------	--------------------------	---	-------------------------

## MISSED APCH FIX



CATEGORY	A	B	C	D
S-ILS 27	1066/40		288 (300-¾)	
S-LOC 27	1240/40	462 (500-¾)	1240/50	462 (500-1)
 CIRCLING	1240-1 462 (500-1)	1300-1 522 (600-1)	1380-1¾ 602 (700-1¾)	1580-2½ 802 (900-2½)



ILS or LOC RWY 27