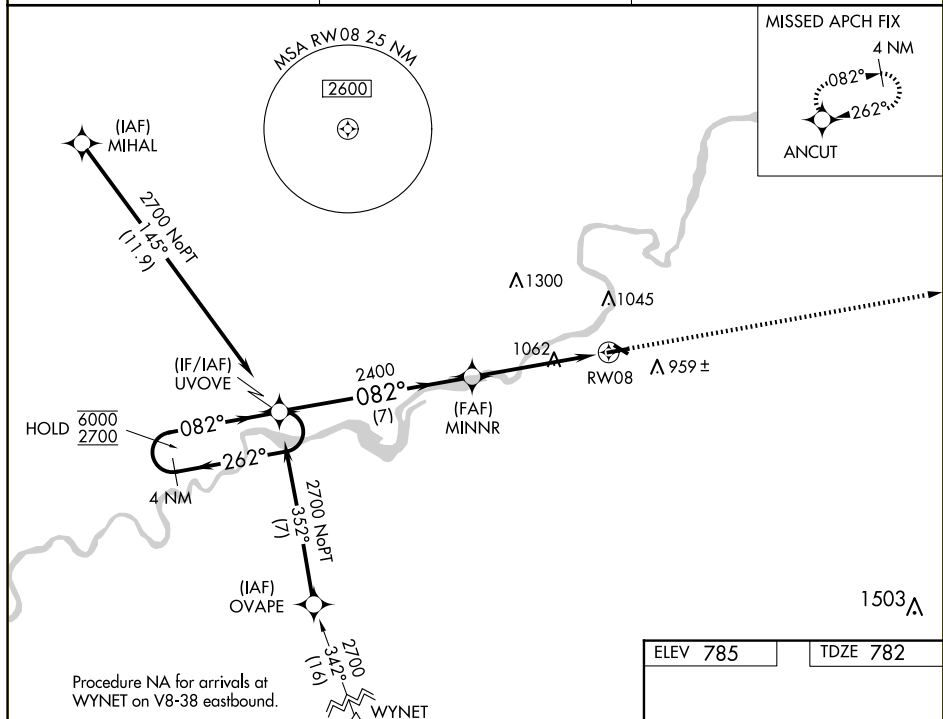



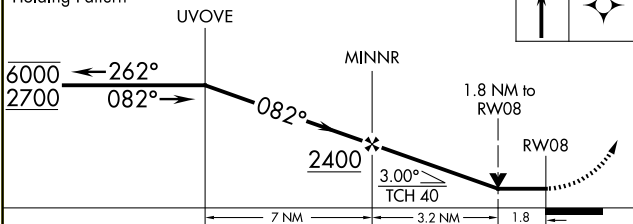
24025

RNAV (GPS) RWY 8  
DIXON MUNI-CHARLES R WALGREEN FLD (C73)

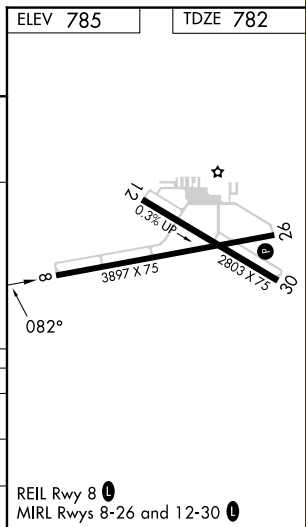
**MISSED APPROACH:** Climb to 2700  
direct ANCUT and hold.

UNICOM  
123.05 (CTAF) **L**

2700	ANCUT
	



CATEGORY	A	B	C	D
LP MDA	1380-1	598 (600-1)	1380-1 $\frac{3}{4}$ 598 (600-1 $\frac{3}{4}$ )	NA
LNAV MDA	1380-1	598 (600-1)	1380-1 $\frac{3}{4}$ 598 (600-1 $\frac{3}{4}$ )	NA
CIRCLING	1380-1 595 (600-1)	1400-1 615 (700-1)	1420-1 $\frac{3}{4}$ 635 (700-1 $\frac{3}{4}$ )	NA



DIXON MUNI-CHARLES R WALGREEN FLD (C73)

RNAV (GPS) RWY 8

EC-3, 10 JUL 2025 to 07 AUG 2025