

WAAS CH <b>82613</b> <b>W27A</b>	APP CRS <b>276°</b>	Rwy Idg TDZE Apt Elev	<b>5000</b> <b>753</b> <b>755</b>
--	------------------------	-----------------------------	---

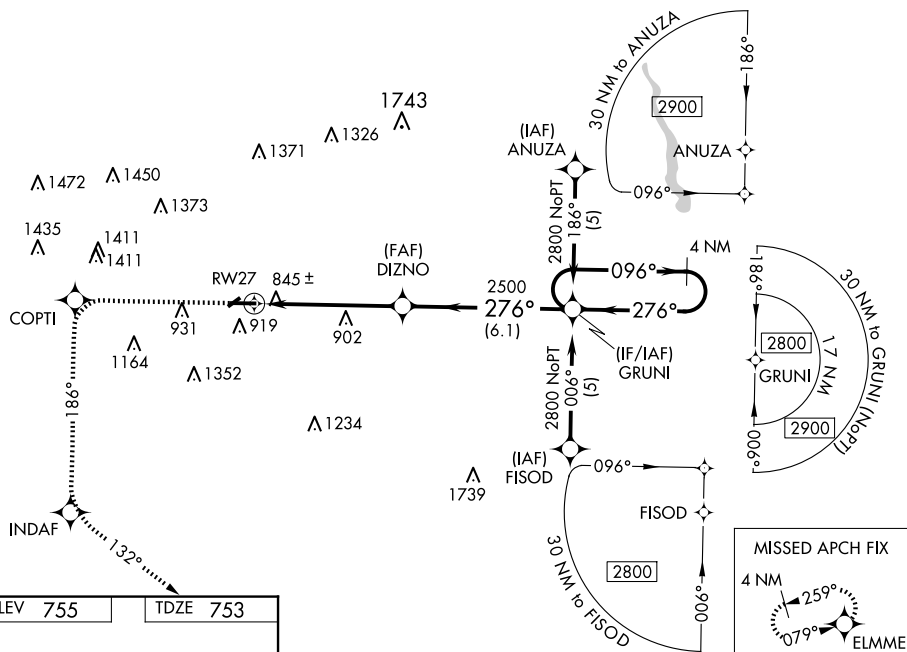
# RNAV (GPS) RWY 27

## MOUNT PLEASANT MUNI (MOP)

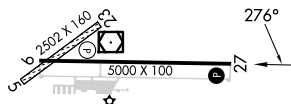
**▼** For uncompensated Baro-VNAV systems, LNAV/VNAV NA below -16°C (4°F) or above 47°C (116°F), DME/DME RNP-0.3 NA. When local altimeter setting not received, use Alpha altimeter setting and increase all DA 42 feet and all MDA 60 feet, increase LPV, LNAV/VNAV all Cats, LNAV Cat D and Circling Cat C visibilities  $\frac{1}{4}$  mile. Baro-VNAV and VDP NA when using Alpha altimeter setting. Circling NA to Rwys 5 and 23.

**MISSED APPROACH:** Climb to 3000 direct COPTI and via 186° track direct INDAF and via 132° track to ELMME and hold.

AWOS-3 <b>133.025</b>	GREAT LAKES APP CON★ <b>126.45 235.625</b>	UNICOM <b>123.0 (CTAF) 0</b>
--------------------------	---	---------------------------------



ELEV 755		TDZE 753
----------	--	----------

[illegible]

REIL Rwy 9 and 27 **L**  
MIRL Rwy 9-27 **L**