

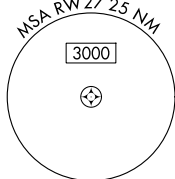
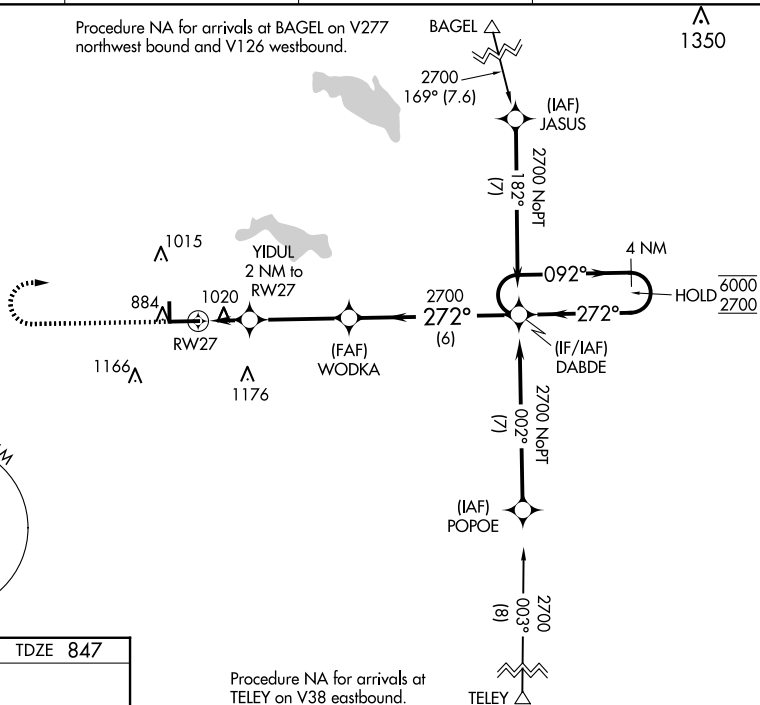
23334

RNAV (GPS) RWY 27
WARSAW MUNI (ASW)

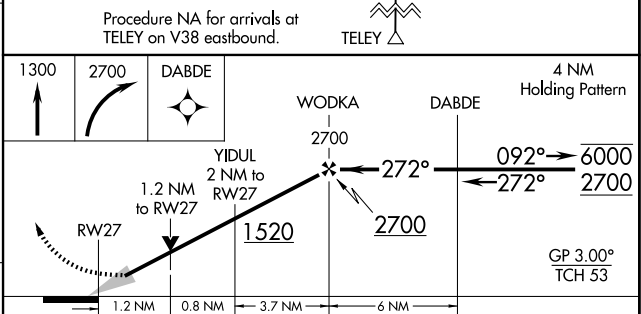
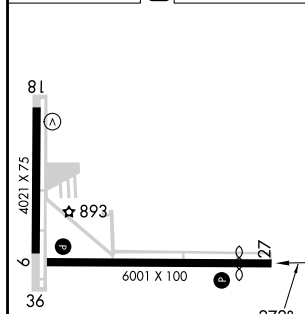
T Circling Rwy 18, 36 NA at night. For uncompensated Baro-VNAV systems, **A** LNAV/VNAV NA below -16°C or above 54°C.

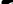
MISSED APPROACH: Climb to 1300 then climbing right turn to 2700 direct DABDE and hold.

AWOS-3 121.125	FORT WAYNE APP CON 127.2 284.6	CLNC DEL 134.05	UNICOM 122.7 (CTAF) ①
--------------------------	--	---------------------------	---------------------------------



ELEV 850	D	TDZE 847
----------	----------	----------



CATEGORY		A	B	C	D
LPV	DA	1047-3 $\frac{3}{4}$		200 (200-3 $\frac{3}{4}$)	
INAV/ VNAV	DA	1334-1 $\frac{3}{8}$		487 (500-1 $\frac{3}{8}$)	
INAV	MDA	1280-1	433 (500-1)	1280-1 $\frac{1}{4}$	433 (500-1 $\frac{1}{4}$)
 CIRCLING		1340-1	490 (500-1)	1480-1 $\frac{3}{4}$ 630 (700-1 $\frac{3}{4}$)	1480-2 630 (700-2)

WARSAW MUNI (ASW)
RNAV (GPS) RWY 27

EC-2, 10 JUL 2025 to 07 AUG 2025