

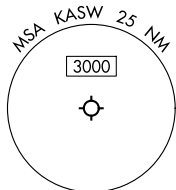
24081

ILS or LOC RWY 27
WARSAW MUNI (ASW)

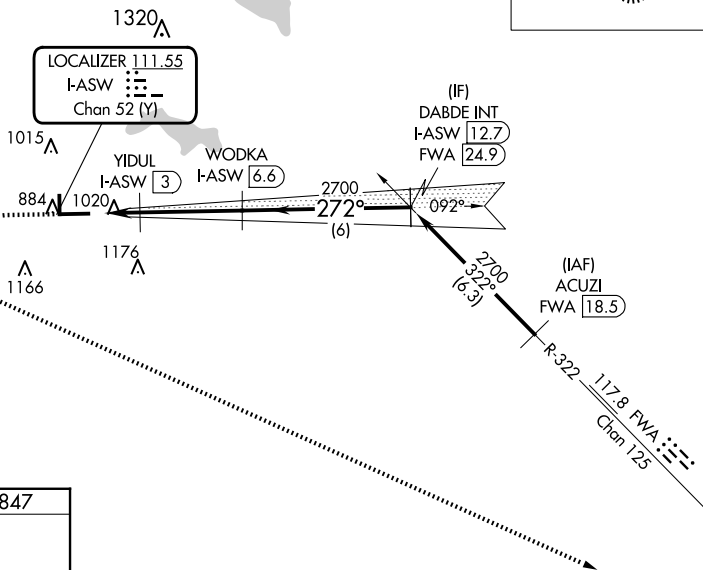
Circling Rwy 18, 36 NA at night.

MISSED APPROACH: Climb to 1300 then climbing left turn to 4000 direct FWA VORTAC and hold.


AWOS-3 121.125	FORT WAYNE APP CON 127.2 284.6	CLNC DEL 134.05	UNICOM 122.7 (CTAF) ①
--------------------------	--	---------------------------	---------------------------------



ALTERNATE MISSED
APCH FIX

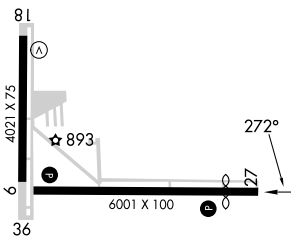


MISSED APCH FIX

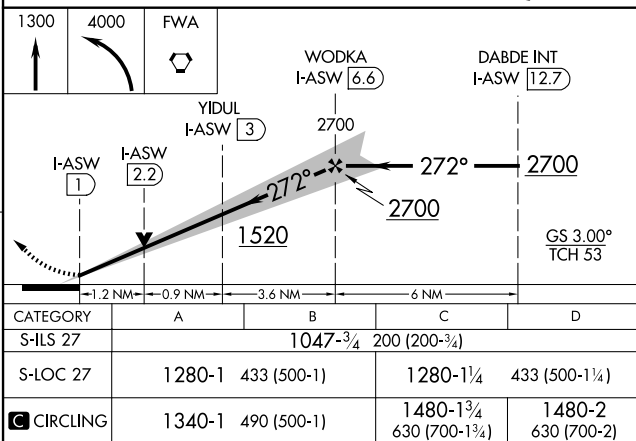
FORT WAYNE
FWA 
117.8
Chan 125



ELEV 850	D	TDZE 847
----------	----------	----------



HIRL Rwy 9-27 **L**
MIRL Rwy 18-36 **L**
REIL Rwy 9 and 27 **L**



WARSAW, INDIANA
Amdt 2 07OCT21

41°16'N-85°50'W

WARSAW MUNI (ASW)
ILS or LOC RWY 27

EC-2, 10 JUL 2025 to 07 AUG 2025