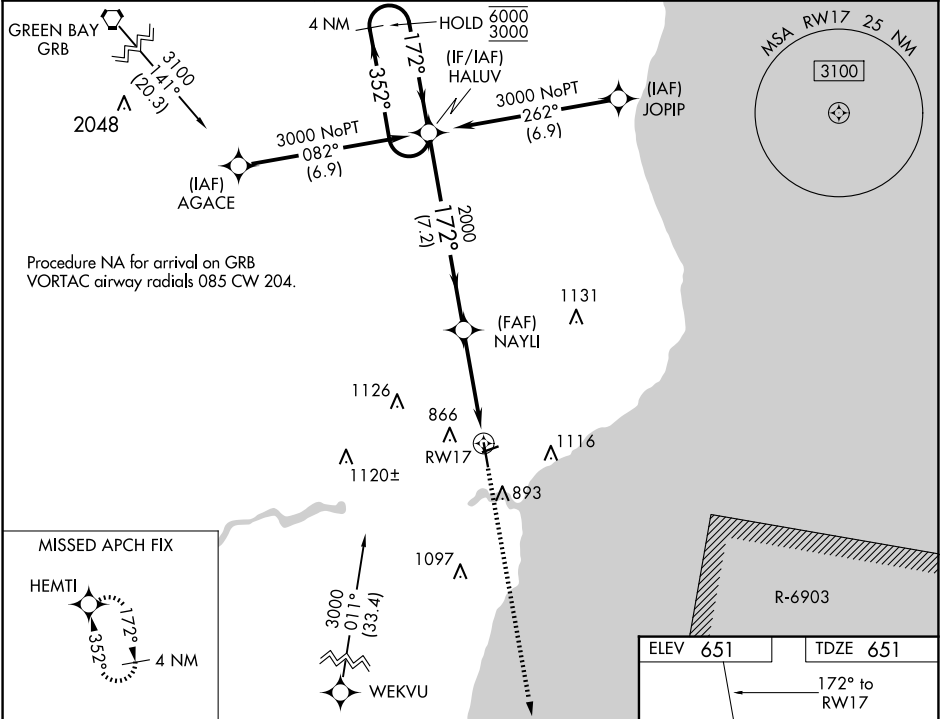


WAAS CH <b>63111</b> <b>W17A</b>	APP CRS <b>172°</b>	Rwy Idg TDZE Apt Elev	<b>5001</b> <b>651</b> <b>651</b>
--	------------------------	-----------------------------	---

RNAV (GPS) RWY 17

MANITOWOC COUNTY (MTW)

RNP APCH. <div><div>▼</div><div>▲</div></div> <div>For uncompensated Baro-VNAV systems, LNAV/VNAV NA below -16°C or above 54°C. For inop ALS, increase LNAV/VNAV all Cats visibility to 7/8 SM.</div>		MALSR 	MISSED APPROACH: Climb to 3000 direct HEMTI and hold.
AWOS-3PT <b>123.775</b>	GREEN BAY APP CON ★ <b>120.2 338.2</b>	UNICOM <b>122.8 (CTAF)</b>	



4 NM Holding Pattern		HALUV	3000	HEMTI
6000 ← 352°		172° →	172°	
GP 3.00° TCH 44		2000	* 1.5 NM to RW17	* LNAV only.
7.2 NM		2.6 NM	1.5	
CATEGORY	A	B	C	D
LPV DA	851-½		200 (200-½)	
LNAV/VNAV DA	942-½		291 (300-½)	
LNAV MDA	1180-½	529 (600-½)	1180-1	529 (600-1)
CIRCLING	1200-1	549 (600-1)	1420-2¼ 769 (800-2¼)	1480-2¾ 829 (900-2¾)

