

LOC I-MTW	APP CRS	Rwy Idg	5001
111.3	172°	TDZE	651
		Apt Elev	651

ILS or LOC RWY 17

MANITOWOC COUNTY (MTW)

ADF required.

⚠

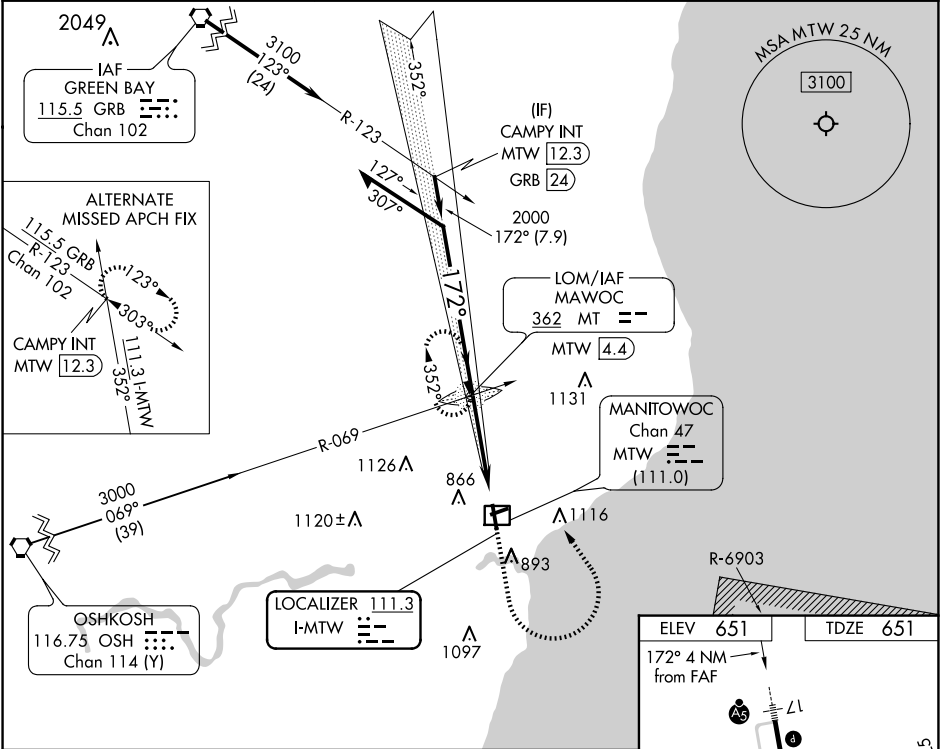
For inop ALS, increase S-LOC 17 Cat C/D visibility to 1 1/2 SM.

MALSR

AS

MISSED APPROACH: Climb to 1200 then climbing left turn to 2300 direct MAWOC LOM and hold.

AWOS-3PT 123.775	GREEN BAY APP CON★ 120.2 338.2	UNICOM 122.8 (CTAF) 0
---------------------	-----------------------------------	--------------------------



Remain within 10 NM

2500

352°

172°

GS 3.00° TCH 45

1981

2000

4 NM

MT LOM MTW 4.4

1200

2300

MT

0.4

MTW

CATEGORY	A	B	C	D
S-ILS 17	851-1/2		200 (200-1/2)	
S-LOC 17	1160-1/2 509 (600-1/2)		1160-1 509 (600-1)	
CIRCLING	1200-1 549 (600-1)		1420-2 1/4 769 (800-2 1/4) 1480-2 3/4 829 (900-2 3/4)	

ELEV 651 TDZE 651

172° 4 NM from FAF

AS

L1

3341 X 100

0.4% UP

5001 X 100

709

35

REIL Rwy 35 0 MRL Rwy 7-25 0 HIRL Rwy 17-35 0

FAF to MAP 4 NM

Knots	60	90	120	150	180
Min:Sec	4:00	2:40	2:00	1:36	1:20