

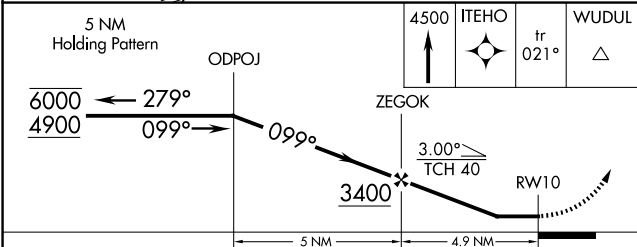
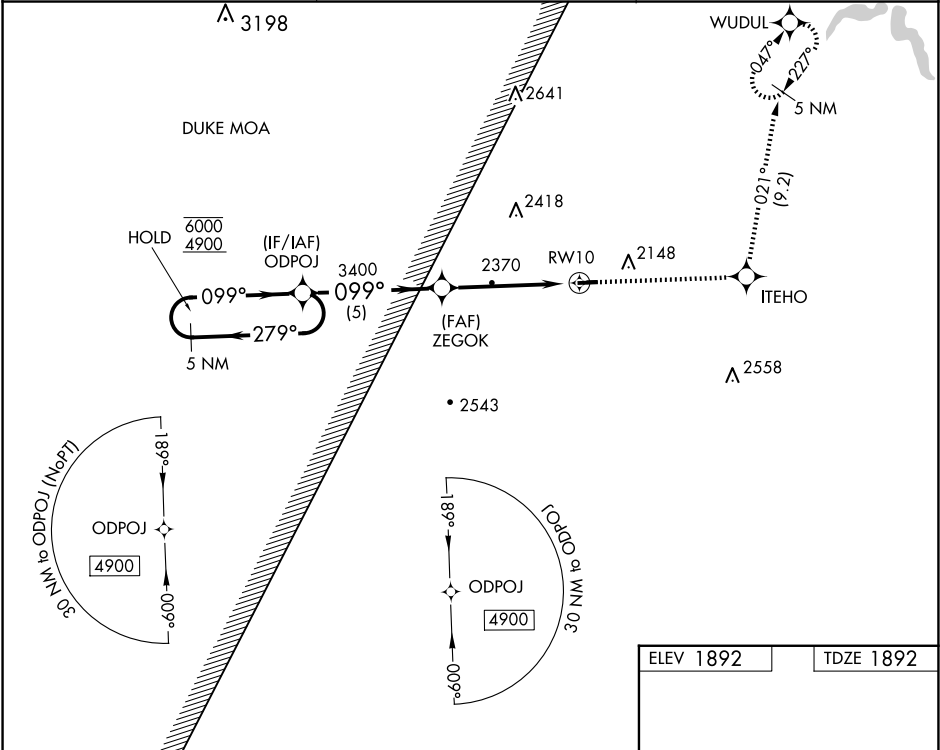
WAAS CH 58130 W10A	APP CRS 099°	Rwy Idg TDZE 1892 Apt Elev 1892	3597
--	------------------------	---	-------------

RNAV (GPS) RWY 10

GRAND CANYON RGNL (N38)

RNP APCH.	<div><div>▼</div><div>⚠</div></div> <div>Circling NA to Rws 11 and 29. Procedure NA at night. Rwy 10 helicopter visibility reduction below 1 SM NA.</div>	MISSED APPROACH: Climb to 4500 direct ITEHO and on track 021° to WUDUL and hold.
-----------	---	--

AWOS-3PT 120.925	ELMIRA APP CON ★ 128.425 257.8	UNICOM 122.8 (CTAF) 0
----------------------------	--	---------------------------------



ELEV 1892	TDZE 1892
<div><div>099°</div><div>10</div><div>3597 X 60</div><div>1576 X 80</div><div>0.6% UP</div><div>28</div></div>	
MIRL Rwy 10-28 0 REIL Rwy 28 0	

CATEGORY	A	B	C	D
LP MDA	2760-1 868 (900-1)	2760-1¼ 868 (900-1¼)	2760-2½ 868 (900-2½)	NA
LNNAV MDA	2760-1 868 (900-1)	2760-1¼ 868 (900-1¼)	2760-2½ 868 (900-2½)	NA
CIRCLING	2760-1¼ 868 (900-1¼)	2760-2½ 868 (900-2½)	2760-2½ 868 (900-2½)	NA

NE-4, 10 JUL 2025 to 07 AUG 2025

NE-4, 10 JUL 2025 to 07 AUG 2025