

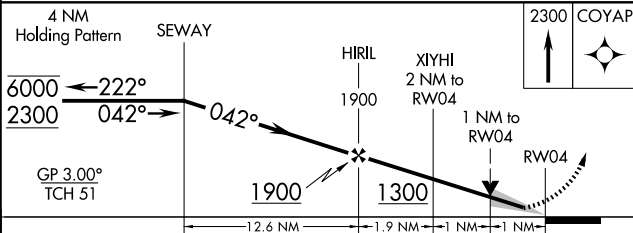
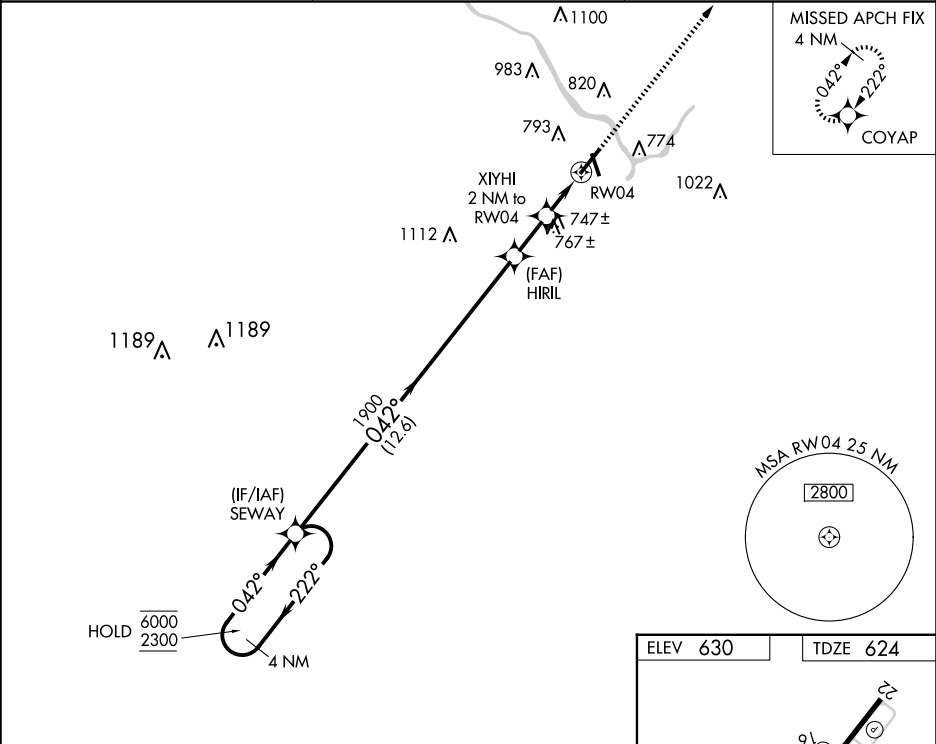
WAAS CH 42799 W04A	APP CRS 042°	Rwy Idg TDZE 624 Apt Elev 630
--	------------------------	---

RNAV (GPS) RWY 4

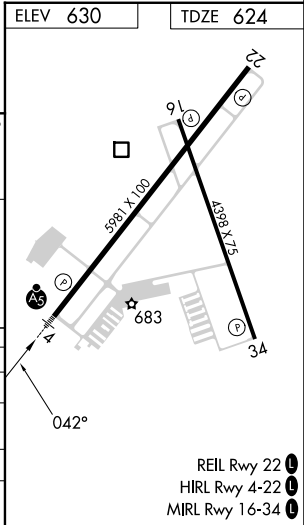
GREATER KANKAKEE (IKK)

RNP APCH - GPS.	MALSR 	MISSED APPROACH: Climb to 2300 direct COYAP and hold.
Circling Rwy 16, 34 NA at night. For uncompensated Baro-VNAV systems, LNAV/VNAV NA below -16°C or above 54°C. For inop ALS, increase LNAV Cats C/D to 1 SM. 		

AWOS-3 128.475	CHICAGO CENTER 132.5 284.7	UNICOM 123.0 (CTAF) 0
--------------------------	--------------------------------------	---------------------------------



CATEGORY	A	B	C	D
LPV DA	824-1/2	200 (200-1/2)		
LNAV/VNAV DA	1010-5/8	386 (400-1/2)		
LNAV MDA	1000-1/2	376 (400-1/2)	1000-5/8	376 (400-1/2)
CIRCLING	1080-1 450 (500-1)	1100-1 470 (500-1)	1140-1 1/2 510 (600-1 1/2)	1340-2 1/4 710 (800-2 1/4)



REIL Rwy 22 0
HIRL Rwy 4-22 0
MIRL Rwy 16-34 0