

WAAS CH <b>97539</b> <b>W29A</b>	APP CRS <b>286°</b>	Rwy Idg TDZE <b>1419</b> Apt Elev <b>1419</b>	<b>5502</b>
--	------------------------	---	-------------

RNAV (GPS) RWY 29

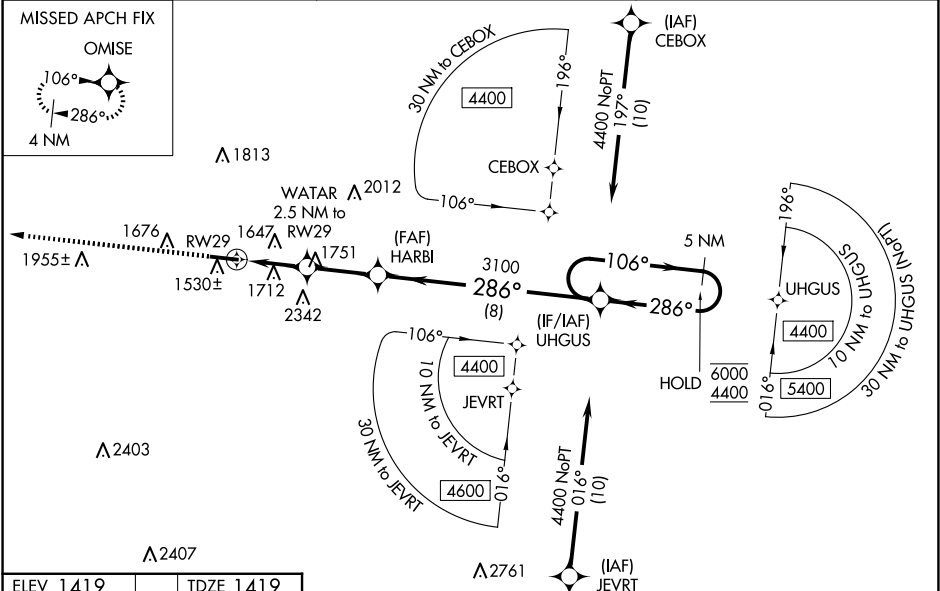
INDIANA COUNTY/JIMMY STEWART FLD (IDI)

RNP APCH - GPS

Baro-VNAV and VDP NA when using Allegheny County altimeter setting. For uncompensated Baro-VNAV systems, LNAV/VNAV NA below -17°C or above 54°C. Rwy 29 helicopter visibility reduction below ¾ SM NA. When local altimeter setting not received, use Allegheny County altimeter setting and increase LPV DA to 1874 feet and all visibilities ¾ SM. Increase LNAV/VNAV DA to 2099 feet and all visibilities ½ SM. Increase all MDAs 120 feet and LNAV visibility Cat C/D ¾ SM, and Circling visibility Cat A/B ¼ SM.

MISSED APPROACH:  
Climb to 3600 direct OMISE and hold.

AWOS-3 <b>126.625</b>	JOHNSTOWN APP CON★ <b>121.2 299.2</b>	UNICOM <b>122.8 (CTAF) 0</b>
--------------------------	--	---------------------------------



ELEV 1419 TDZE 1419

3600 OMISE

WATER 2.5 NM to RWY 29

HARBI 3100

UHGUS

5 NM Holding Pattern

GP 3.02° TCH 46

REIL Rwy 11 0

HIRL Rwy 11-29 0

CATEGORY	A	B	C	D
LPV DA	1755-1		336 (400-1)	
LNAV/VNAV DA	1980-1½		561 (600-1½)	
LNAV MDA	1980-1	561 (600-1)	1980-1½	561 (600-1½)
CIRCLING	2120-1 701 (800-1)	2180-1 761 (800-1)	2660-3	1241 (1300-3)

RNAV (GPS) RWY 29

NE-4, 10 JUL 2025 to 07 AUG 2025

NE-4, 10 JUL 2025 to 07 AUG 2025