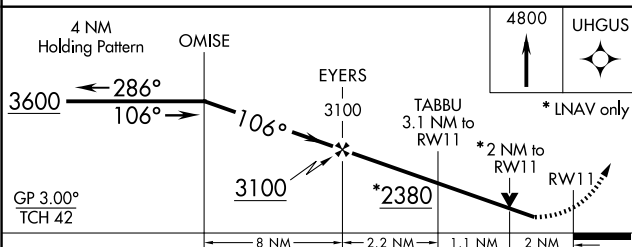
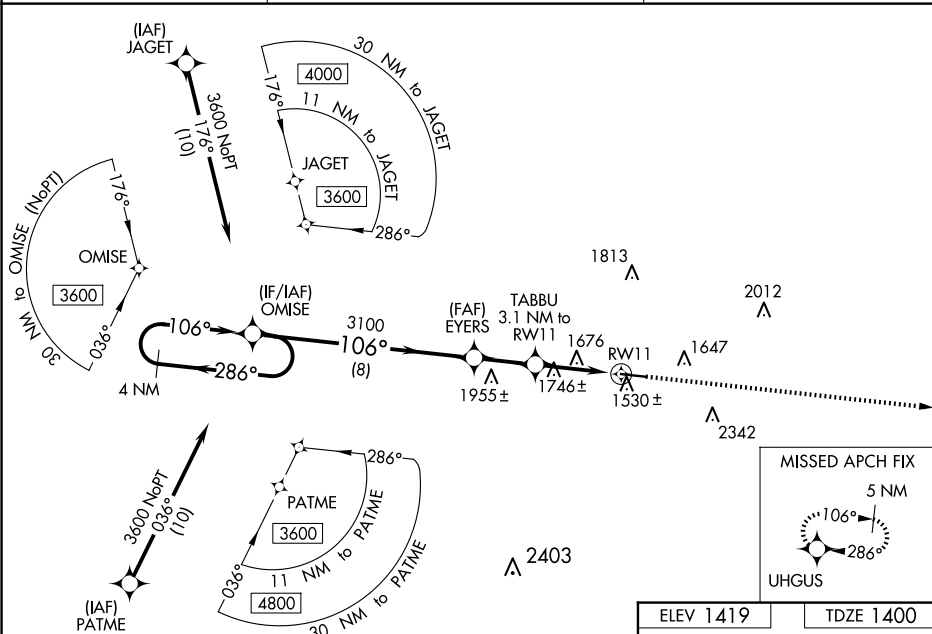


RNAV (GPS) RWY 11
INDIANA COUNTY/JIMMY STEWART FLD (IDI)

MISSED APPROACH.
Climb to 4800 direct
UHGUS and hold.

UNICOM
122.8 (CTAF) **L**




CATEGORY		A	B	C	D
LPV	DA	1907-1 $\frac{3}{4}$ 507 (500-1 $\frac{3}{4}$)			
LNAV/ VNAV	DA	2037-2 $\frac{1}{2}$ 637 (700-2 $\frac{1}{2}$)			
LNAV	MDA	2060-1 660 (700-1)		2060-1 $\frac{7}{8}$ 660 (700-1 $\frac{7}{8}$)	
 CIRCLING		2120-1 701 (800-1)	2180-1 761 (800-1)	2660-3 1241 (1300-3)	

Diagram illustrating a truck on a 0.9% UP grade. The truck is tilted at 106°. A star is located on the roof. Dimensions are given as 5502 X 100.