

WAAS CH 58022 W22A	APP CRS 223°	Rwy Ldg TDZE Apt Elev	4042 172 172
--	------------------------	-----------------------------	---

RNAV (GPS) RWY 22

ESSEX COUNTY (CDW)

RNP APCH - GPS.	MISSED APPROACH: Climb to 2000 direct YOYUN and hold.
Rwy 22 helicopter visibility reduction below 1 SM NA. For uncompensated Baro-VNAV systems, LNAV/VNAV NA below -15°C or above 54°C. Circling Rwy 10, 28 NA at night. Circling NA E of Rwy 4-22.	

ATIS 135.5	NEWARK APP CON 127.6 379.9	CALDWELL TOWER ★ 119.8 (CTAF) 0	GND CON 121.9	CLNC DEL 121.1	UNICOM 122.95
----------------------	--------------------------------------	---	-------------------------	--------------------------	-------------------------

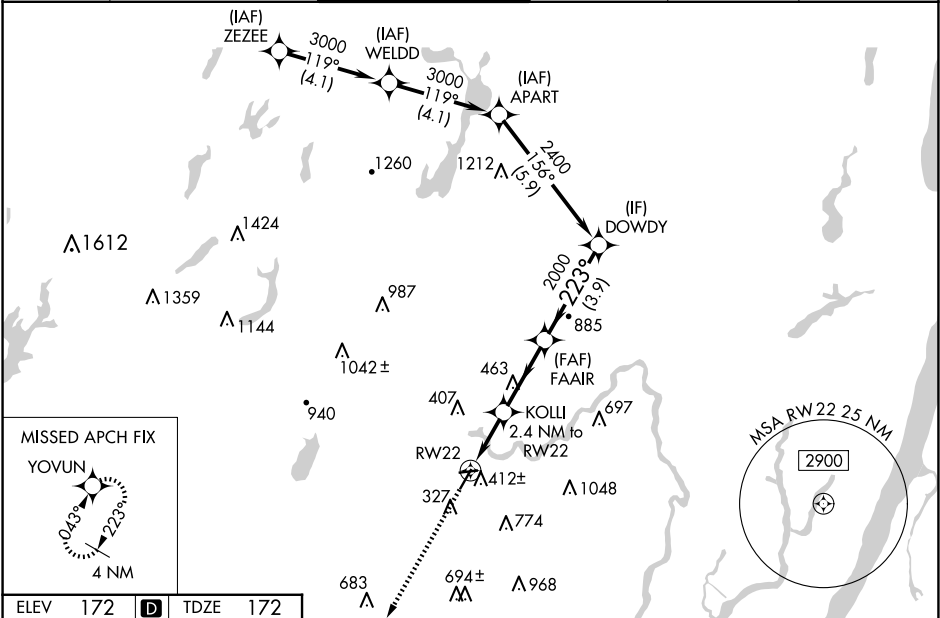


Diagram illustrating the missed approach fix (YOYUN) and the final approach segment. The diagram shows a runway (RW22) with a heading of 223°. The distance from the missed approach fix to the runway is 4.5 NM. The diagram also shows the distance from the missed approach fix to the runway (RW22) as 2.4 NM. The diagram includes a star symbol labeled "TWR" (Tower) and a distance of 3719 X 75 from the tower to the runway. The diagram also shows a distance of 28 from the tower to the runway. The diagram includes a star symbol labeled "TWR" (Tower) and a distance of 3719 X 75 from the tower to the runway. The diagram also shows a distance of 28 from the tower to the runway.

REIL Rwy 22 **L**
MIRL Rwy 10-28 **L**
HIRL Rwy 4-22 **L**

<div> <div>2000</div> <div>↑</div> </div> <div> <div>YOYUN</div> <div>✦</div> </div>	<div> <div>VGSI and descent angles not coincident</div> <div>(VGSI Angle 3.00/TCH 42).</div> </div>		<div> <div>DOWDY</div> <div>2400</div> </div>	
		<div> <div>FAAIR</div> <div>2000</div> </div>		
		<div> <div>KOLLI</div> <div>2.4 NM to RW22</div> </div>		
		<div> <div>1000</div> <div>2000</div> </div>		
		<div> <div>2.4 NM</div> <div>3 NM</div> <div>3.9 NM</div> </div>		
CATEGORY	A	B	C	D
LPV DA	459-1 287 (300-1)			NA
LNAV/VNAV DA	610-1 ³ / ₈ 438 (500-1 ³ / ₈)			NA
LNAV MDA	680-1 508 (600-1)		680-1 ³ / ₈ 508 (600-1 ³ / ₈)	NA
C CIRCLING	960-1 788 (800-1)	1040-2 868 (900-2)	1100-2 ³ / ₄ 928 (1000-2 ³ / ₄)	NA