

SINTON, TEXAS

AL-5274 (FAA)

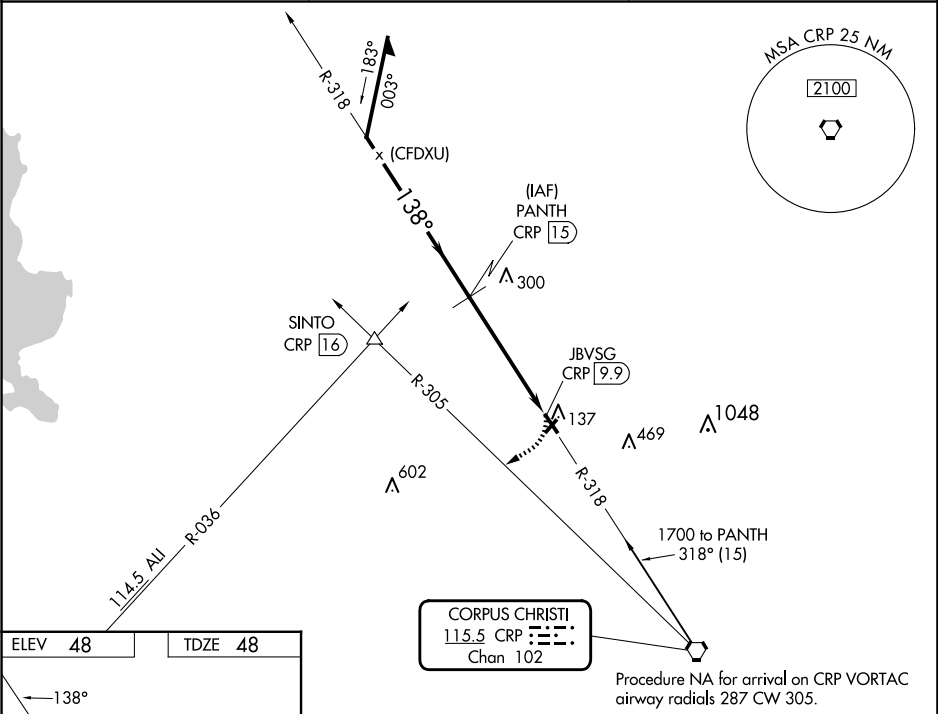
24137

VORTAC CRP	APP CRS	Rwy Idg	4073
115.5	138°	TDZE	48
Chan 102		Apt Elev	48

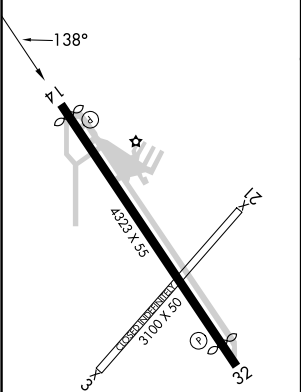
VOR RWY 14
SINTON (T69)

DME required.	MISSED APPROACH: Climbing right turn to 1800 on heading 230° and CRP VORTAC R-305 to SINTO INT/CRP 16 DME.
<div><div>Procedure NA at night.</div><div>Rwy 14 helicopter visibility reduction below 1 SM NA.</div></div>	

AWOS-3 118.25	CORPUS APP CON 120.9 348.725	UNICOM 122.8 (CTAF) 0
------------------	---------------------------------	--------------------------



ELEV 48	TDZE 48
---------	---------



MIRL Rwy 14-32 0
REIL Rwy 14 and 32 0

VGSI and descent angles not coincident (VGSI Angle 3.00°/TCH 19).		1800 hdg 230°	CRP R-305	SINTO △
Remain within 10 NM		PANTH CRP 15		
1700		318°		
1700		138°		
3.00° TCH 40		JBVSG CRP 9.9		
5.1 NM				
CATEGORY	A	B	C	D
S-14	640-1	592 (600-1)	NA	
CIRCLING	640-1 592 (600-1)	720-1 672 (700-1)	NA	

SINTON, TEXAS
Amdt 1C 31DEC20

28°02' N-97°33' W

SINTON (T69)
VOR RWY 14

SC-3, 10 JUL 2025 to 07 AUG 2025

SC-3, 10 JUL 2025 to 07 AUG 2025