

SINTON, TEXAS

AL-5274 (FAA)

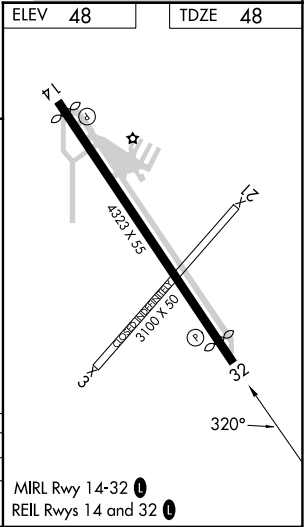
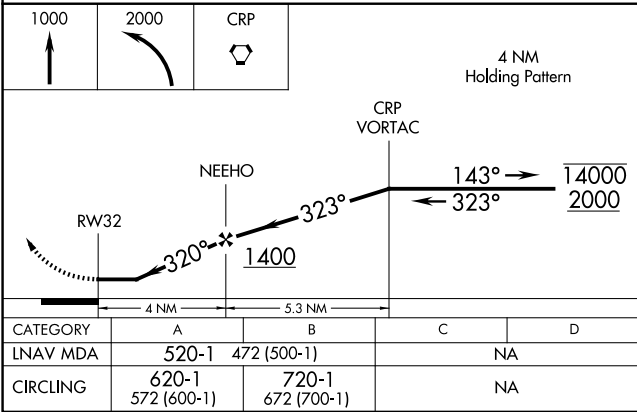
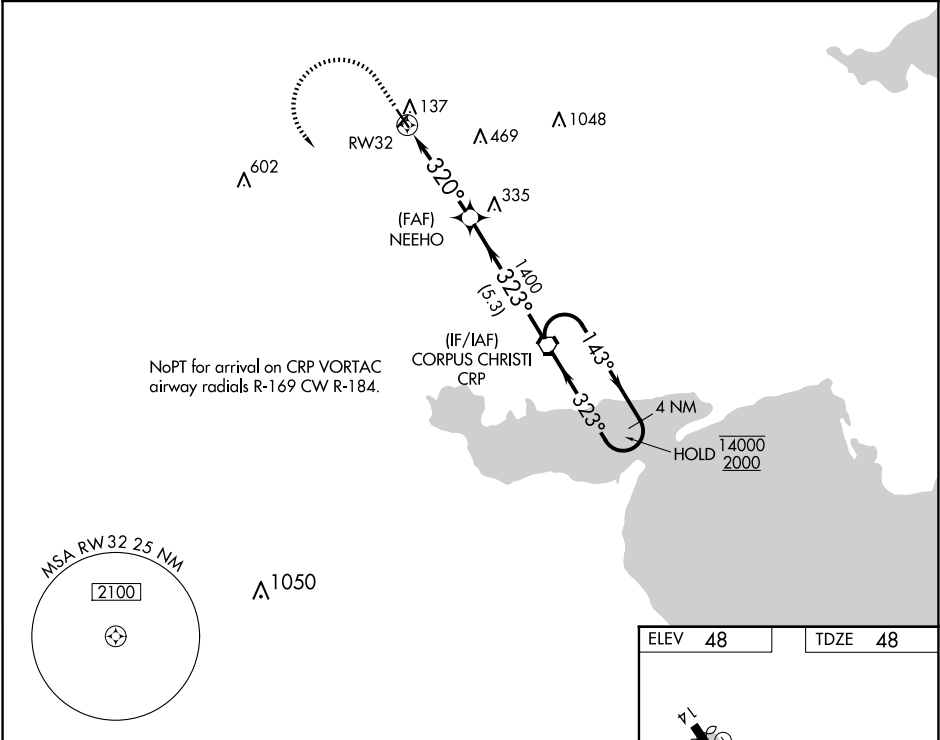
24137

APP CRS	Rwy Idg	3923
320°	TDZE	48
	Apt Elev	48

RNAV (GPS) RWY 32
SINTON (T69)

RNP APCH.	MISSED APPROACH: Climb to 1000 then climbing left turn to 2000 direct CRP VORTAC and hold.
<div>Procedure NA at night.</div> <div>Rwy 32 helicopter visibility reduction below 1 SM NA.</div>	

AWOS-3 118.25	CORPUS APP CON 120.9 348.725	UNICOM 122.8 (CTAF) 0
------------------	---------------------------------	--------------------------



SINTON, TEXAS
Orig-B 31DEC20

28°02' N-97°33' W

RNAV (GPS) RWY 32
SINTON (T69)

SC-3, 10 JUL 2025 to 07 AUG 2025