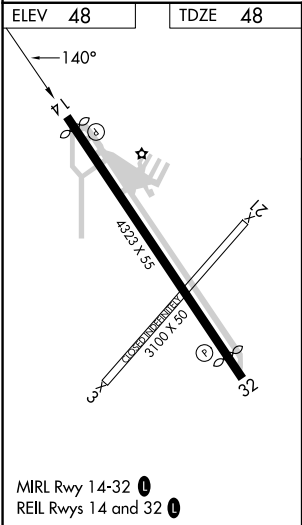
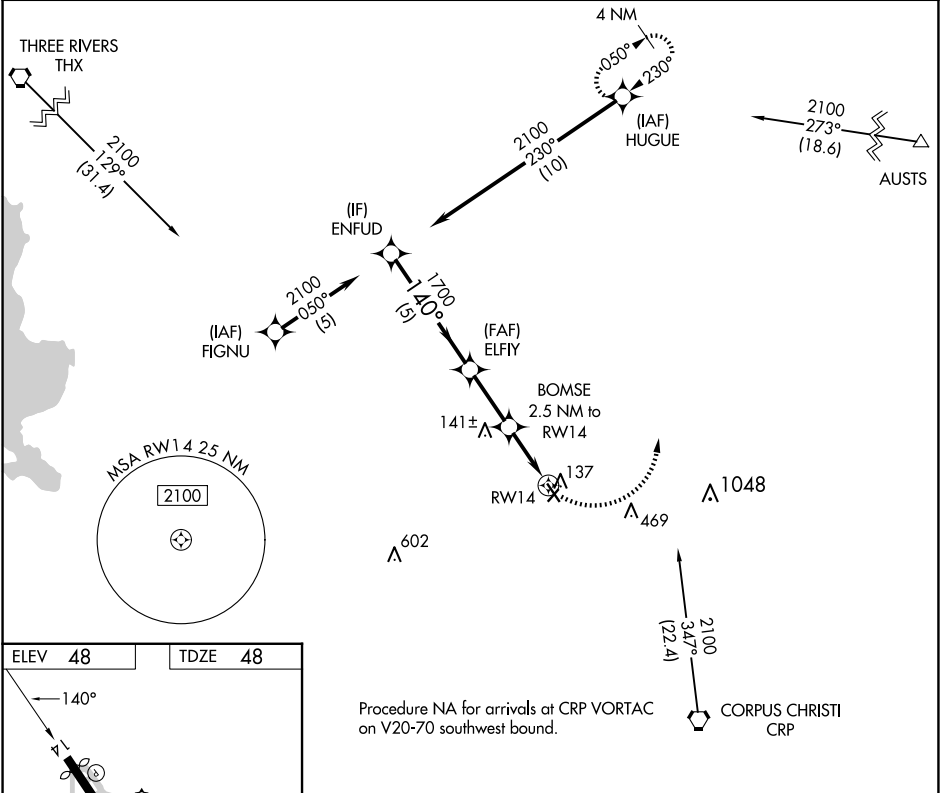


APP CRS	Rwy Idg	4073
140°	TDZE	48
	Apt Elev	48

RNAV (GPS) RWY 14
SINTON (T69)

RNP APCH.	MISSED APPROACH: Climbing left turn to 2100 direct HUGUE and hold.
▼ Procedure NA at night. ▲ Rwy 14 helicopter visibility reduction below 1 SM NA.	

AWOS-3 118.25	CORPUS APP CON 120.9 348.725	UNICOM 122.8 (CTAF) 0
------------------	---------------------------------	--------------------------



	ENFUD	ELFIY	BOMSE	RW14
	2100	1700	1040	
	5 NM 2.5 NM 2.5 NM			
CATEGORY	A	B	C	D
LNAV MDA	480-1	432 (500-1)	NA	
CIRCLING	620-1 572 (600-1)	720-1 672 (700-1)	NA	

SC-3, 10 JUL 2025 to 07 AUG 2025

SC-3, 10 JUL 2025 to 07 AUG 2025