

VOR/DME SEG
110.4
Chan **41**

APP CRS
034°

Rwy Idg
TDZE
Apt Elev
N/A
N/A
464

VOR-A
PENN VALLEY (SEG)

⚠

⚠

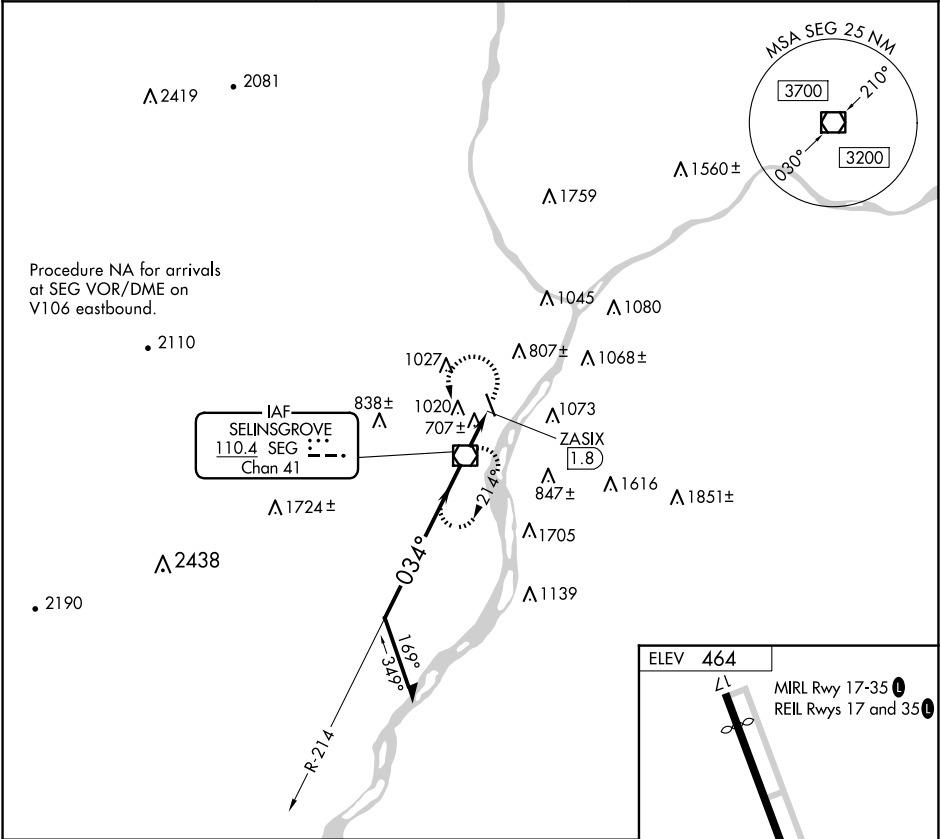
⚠

-15°C

Circling to Rwy 17 NA at night. When Circling to Rwy 35 at night, operational VGSI required, remain on or above VGSI glidepath until threshold.

MISSED APPROACH: Climbing left turn to 3400 direct SEG VOR/DME and hold, continue climb-in-hold to 3400.

ASOS 123.975	HARRISBURG APP CON 118.25 269.45	UNICOM 122.7 (CTAF) 0
------------------------	--	--



Remain within 10 NM

3400

214°

034°

1900

ZASIX 1.8

1.8 NM

3400

SEG

⬇

⬆

⬇

⬆

CATEGORY

A

B

C

D

1400-1¼

936 (1000-1¼)

NA

ELEV 464

MIRL Rwy 17-35

REIL Rws 17 and 35

034°

0.35% Up

35