

WAAS CH <b>93275</b> <b>W26A</b>	APP CRS <b>259°</b>	Rwy Idg TDZE <b>456</b> Apt Elev <b>457</b>
--	------------------------	---

RNAV (GPS) RWY 26

DANBURY MUNI (D.X.R.)

RNP APCH - GPS.

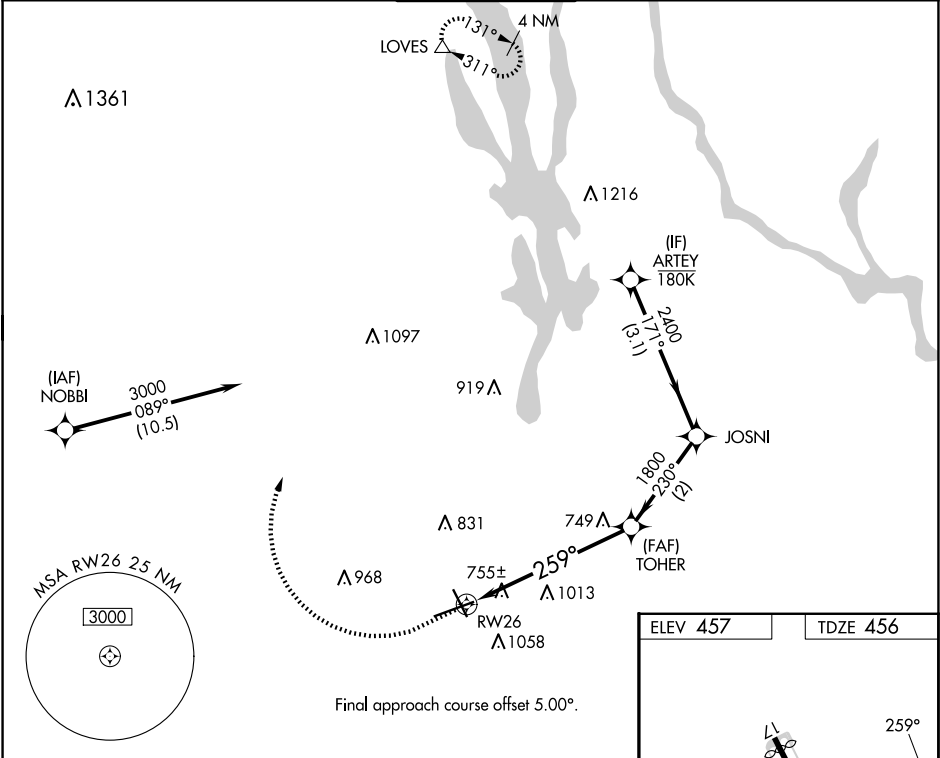
▼

▲

When local altimeter setting not received, use White Plains altimeter setting and increase all MDAs 60 feet and LNAV visibility Cat A ¼ SM and LP visibility Cat C ½ SM and Circling visibility Cat C ¼ SM. Procedure NA at night. Helicopter visibility reduction below 1 SM NA. Circling NA south of Rwy 8-26.

MISSED APPROACH: Climb to 1300 then climbing right turn to 3000 direct LOVES and hold.

ATIS <b>127.75</b>	HPN ASOS <b>133.8</b>	NEW YORK APP CON <b>126.4 257.65</b>	DANBURY TOWER ★ <b>119.4 0</b> (CTAF)	GND CON <b>121.6</b>	CLNC DEL <b>128.6</b> (When twr closed)	UNICOM <b>122.95</b>
-----------------------	--------------------------	---	--	-------------------------	---	-------------------------



ARTEY		JOSNI		1300	3000	LOVES
3000		171°		TOHER	3.77°	△
2400		230°		3.77°	TCH 40	
1800		259°		RW26		
3.1 NM		2 NM		3.3 NM		
CATEGORY	A	B	C	D		
LP MDA	1020-1	564 (600-1)	1020-1½ 564 (600-1½)	NA		
LNAV MDA	1280-1 824 (900-1)	1280-1¼ 824 (900-1¼)	1280-2½ 824 (900-2½)	NA		
CIRCLING	1280-1¼	823 (900-1¼)	1300-2½ 843 (900-2½)	NA		

ELEV 457

TDZE 456

This diagram shows the layout of RWY 26 and the Tower (TWR 518). The runway is 4421 x 150 feet. The tower is located 3135 x 100 feet from the runway. The diagram also shows the runway axis, the final approach course, and the distance to the tower (3.3 NM).

REIL Rwy 8 and 26 0

MIRL Rwy 8-26 0