

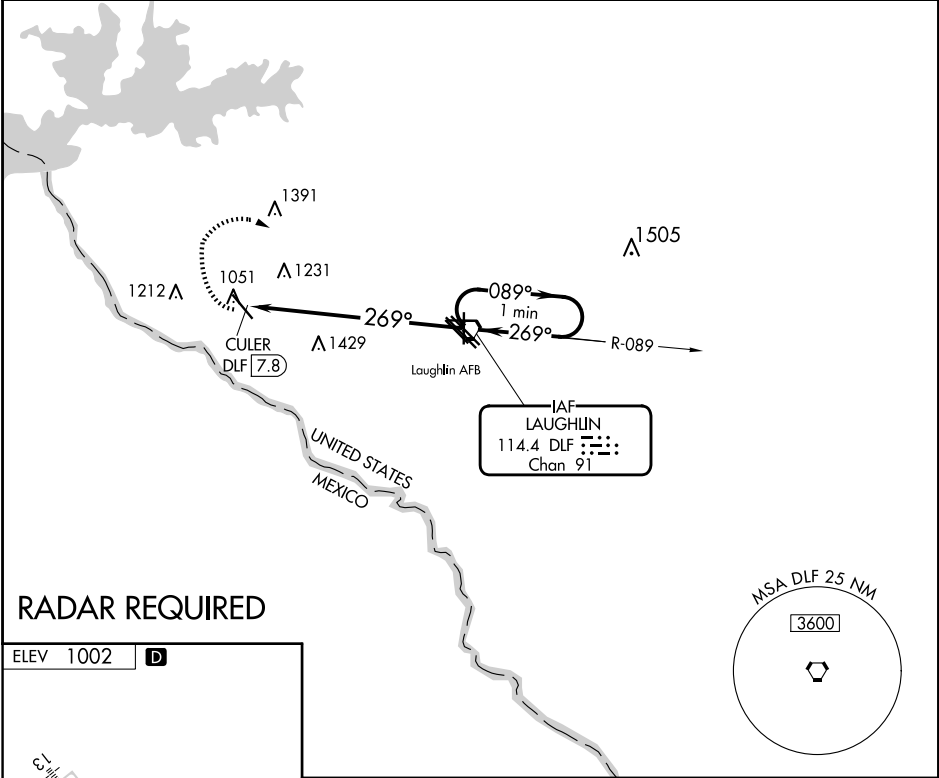
VORTAC DLF	APP CRS	Rwy Idg	N/A
114.4	269°	TDZE	N/A
Chan 91		Apt Elev	1002

VOR-A  
DEL RIO INTL (DRT)

- ⚠** Circling NA for Cat D SW of Rwy 13-31. If local altimeter setting not received, use Laughlin AFB altimeter setting and increase all MDAs 40 feet.

**⚠** MISSED APPROACH: Climbing right turn to 4000 via heading 340° then right turn direct DLF VORTAC and hold.

ASOS 118.525	DEL RIO APP CON * 119.6 259.1	CLNC DEL 120.5	UNICOM 122.8 (CTAF) <b>0</b>
-----------------	----------------------------------	-------------------	---------------------------------



RADAR REQUIRED

