

RNP APCH.

⚠

⚠

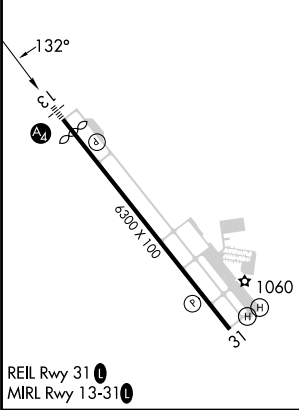
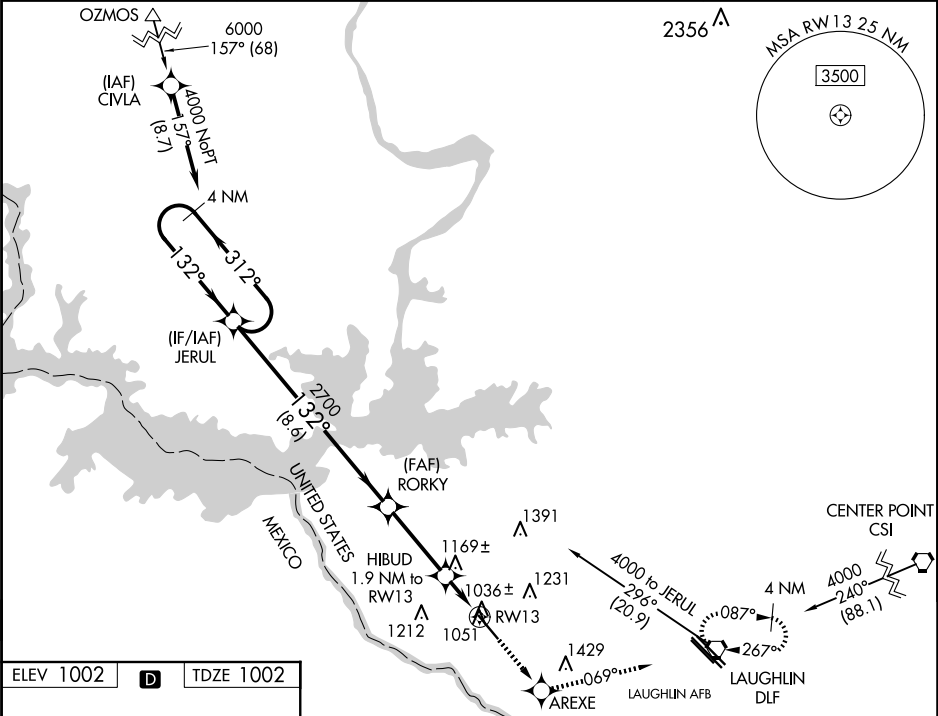
W

Circling NA for Cat D southwest of Rwy 13-31. When local altimeter setting not received, use Laughlin AFB altimeter setting and increase all DA 30 feet and all MDA 40 feet, increase LPV visibility all Cats, LNAV Cats C and D and Circling Cats C and D visibility ¼ SM. Baro-VNAV NA when using Laughlin AFB altimeter setting. For uncompensated Baro-VNAV systems, LNAV/VNAV NA below -17° C (2°F) or above 47°C (116°F).

MALS

MISSED APPROACH: Climb to 4000 direct AREXE and on 069° track to DLF VORTAC and hold, continue climb-in-hold to 4000.

ASOS 118.525	DEL RIO APP CON * 119.6 259.1	CLNC DEL 120.5	UNICOM 122.8 (CTAF)
-----------------	----------------------------------	-------------------	------------------------



VGSI and RNAV glidepath not coincident (VGSI Angle 3.00/TCH 47).				
4 NM	JERUL	RORKY	AREXE	DLF
Holding Pattern			tr 069°	
4000	312°	2700		
GP 3.00°	132°			
TCH 48				
	8.6 NM	3.2 NM	1.9	
CATEGORY	A	B	C	D
LPV DA	1252-¾		250 (300-¾)	
LNAV/VNAV DA	1401-1		399 (400-1)	
LNAV MDA	1500-½ 498 (500-½)		1500-¾ 498 (500-¾)	
	1500-1 498 (500-1)		1500-1 498 (500-1)	
CIRCLING	1500-1 498 (500-1)	1560-1 558 (600-1)	1740-2 738 (800-2)	1740-2½ 738 (800-2½)