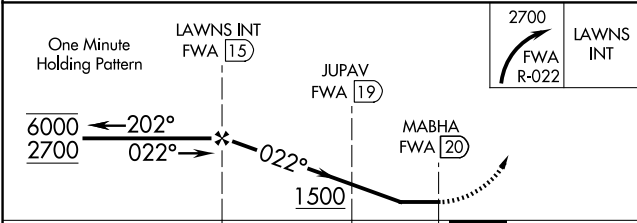
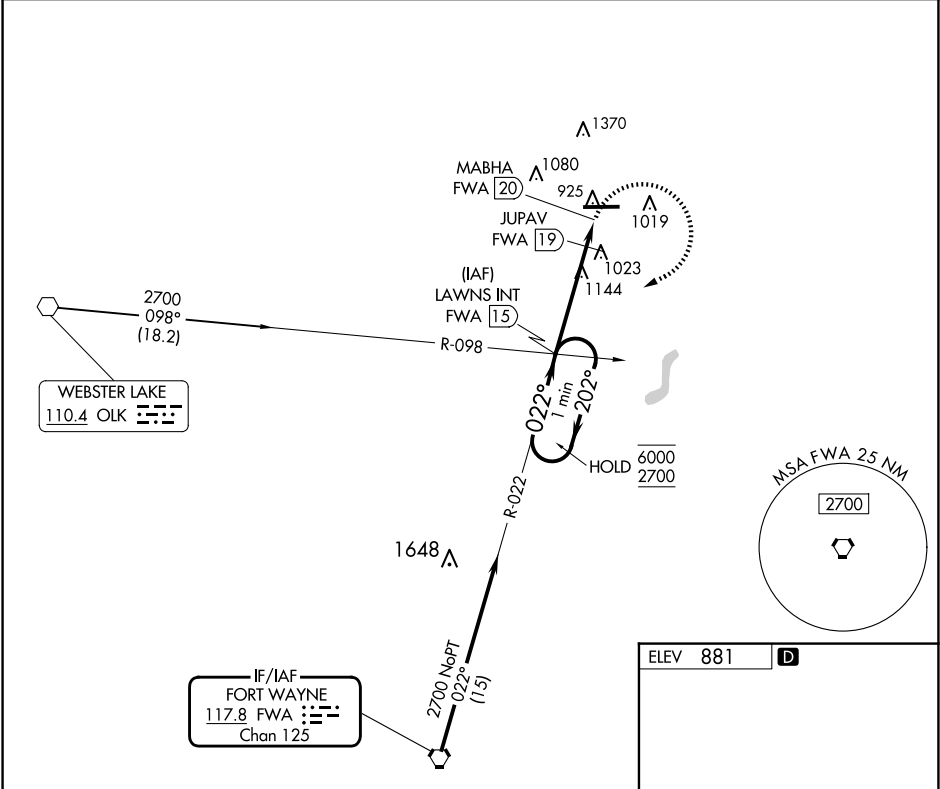


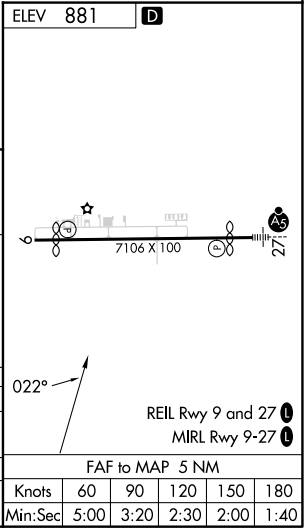
VORTAC FWA	APP CRS	Rwy Idg	N/A
117.8	022°	TDZE	N/A
Chan 125		Apt Elev	881

VOR-A  
DE KALB COUNTY (GWB)

<div><div></div><div></div></div>		MISSED APPROACH: Climbing right turn to 2700 on FWA R-022 to LAWNS INT/FWA 1.5 DME and hold, continue climb-in-hold to 2700.	
AWOS-3P 124.15	FORT WAYNE APP CON 127.2 284.6	CLNC DEL 126.6	UNICOM 123.0 (CTAF) <div></div>



CATEGORY	A	B	C	D
<div></div> CIRCLING	1500-1 619 (700-1)	1560-1 679 (700-1)	1720-2½ 839 (900-2½)	1720-2¾ 839 (900-2¾)
JUPAV FIX MINIMUMS				
<div></div> CIRCLING	1360-1 479 (500-1)	1560-1 679 (700-1)	1720-2½ 839 (900-2½)	1720-2¾ 839 (900-2¾)



EC-2, 10 JUL 2025 to 07 AUG 2025

EC-2, 10 JUL 2025 to 07 AUG 2025