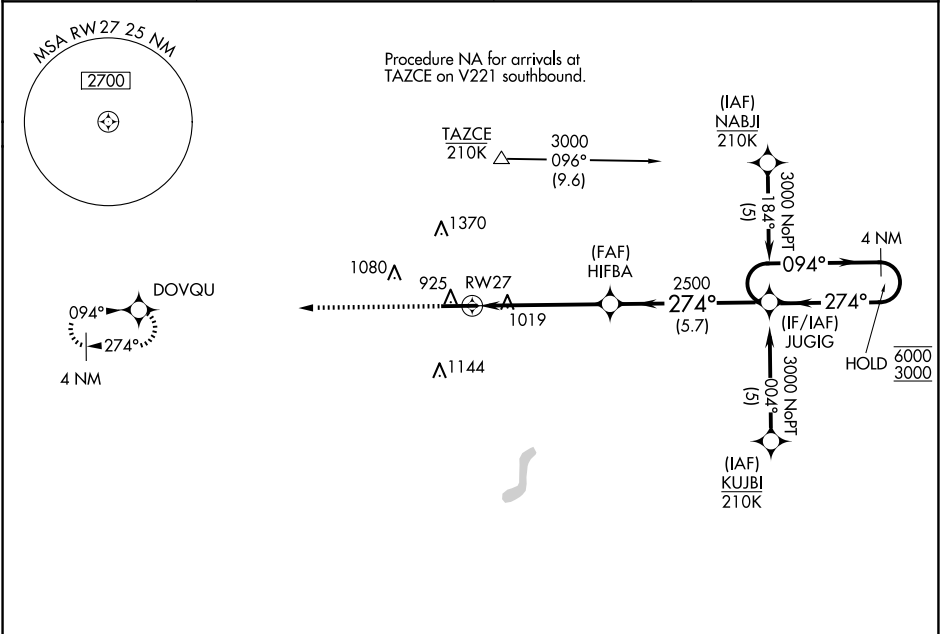


WAAS CH 86401 W27A	APP CRS 274°	Rwy Idg 6356 TDZE 881 Apt Elev 881
--	------------------------	---

RNAV (GPS) RWY 27

DE KALB COUNTY (GWB)

RNP APCH - GPS.		MALSR	MISSED APPROACH: Climb to 3000 direct DOVQU and hold.
For uncompensated Baro-VNAV systems, LNAV/VNAV NA below -16°C or above 54°C.			
AWOS-3P 124.15	FORT WAYNE APP CON 127.2 284.6	CLNC DEL 126.6	UNICOM 123.0 (CTAF)



ELEV 881 D TDZE 881

1648

3000 DOVQU

HIFBA 2500

JUGIG 4 NM Holding Pattern

274° 094° 274° 6000 3000

GP 3.00° TCH 47

CATEGORY	A	B	C	D
LPV DA	1081-1/2 200 (200-1/2)			
LNAV/ VNAV DA	1314-3/4 433 (500-3/4)			
LNAV MDA	1320-1/2 439 (500-1/2)		1320-3/4 439 (500-3/4)	
CIRCLING	1320-1 439 (500-1)	1560-1 679 (700-1)	1720-2 1/2 839 (900-2 1/2)	1720-2 3/4 839 (900-2 3/4)

REIL Rwy 9 and 27

MRL Rwy 9-27

EC-2, 10 JUL 2025 to 07 AUG 2025

EC-2, 10 JUL 2025 to 07 AUG 2025