

ILS or LOC RWY 27  
DE KALB COUNTY (GWB)

**T**  
**A** NA



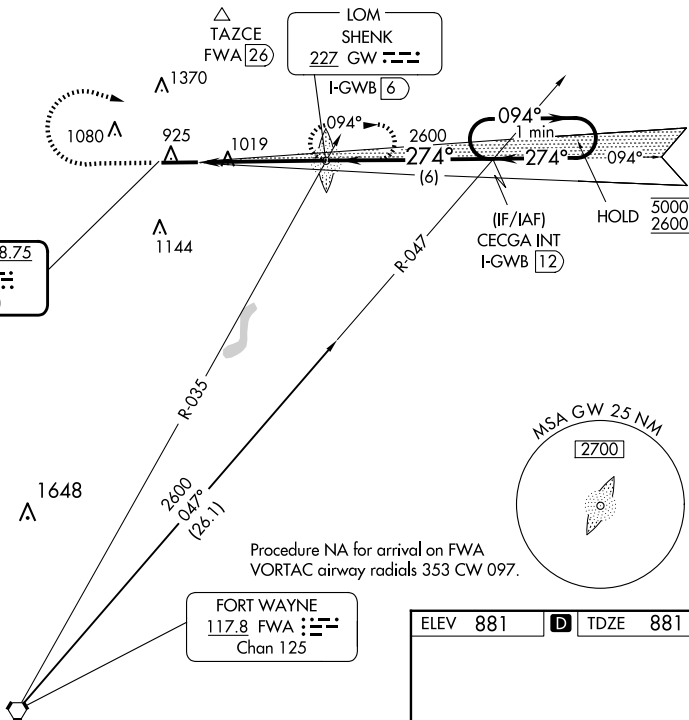
**MISSED APPROACH:** Climb to 2000 then climbing right turn to 2600 direct SHENK LOM/INT/I-GWB 6 DME and hold.

ALTERNATE MISSED  
APCH FIX


117.8 FWA  
Chan 125

022° 202°

TAZCE  
FWA 26



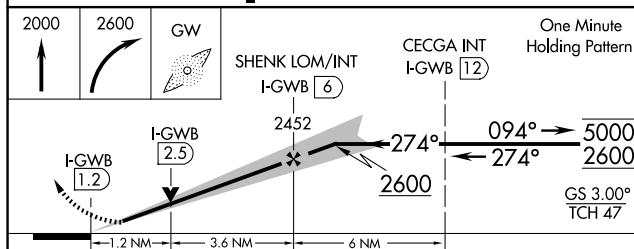
Procedure NA for arrival on FWA  
VORTAC airway radials 353 CW 097.

FORT WAYNE  
117.8 FWA :   
Chan 125

MSA GW 25 NM

2700

ELEV 881	<b>D</b>	TDZE 881
----------	----------	----------



CATEGORY	A	B	C	D
S-ILS 27	1081- $\frac{1}{2}$ 200 (200- $\frac{1}{2}$ )			
S-LOC 27	1320- $\frac{1}{2}$ 439 (500- $\frac{1}{2}$ )		1320- $\frac{3}{4}$ 439 (500- $\frac{3}{4}$ )	
<b>C</b> CIRCLING	1320-1 439 (500-1)	1560-1 679 (700-1)	1720-2 $\frac{1}{2}$ 839 (900-2 $\frac{1}{2}$ )	1720-2 $\frac{3}{4}$ 839 (900-2 $\frac{3}{4}$ )

REIL Rwy 9 and 27 **L**  
MIRL Rwy 9-27 **L**

FAF to MAP 4.8 NM

Knots	60	90	120	150	180
Min:Sec	4:48	3:12	2:24	1:55	1:36