

VOR/DME JBR	APP CRS	Rwy Idg	6200
115.85	227°	TDZE	262
Chan 105(Y)		Apt Elev	262

VOR RWY 23

JONESBORO MUNI (JBR)

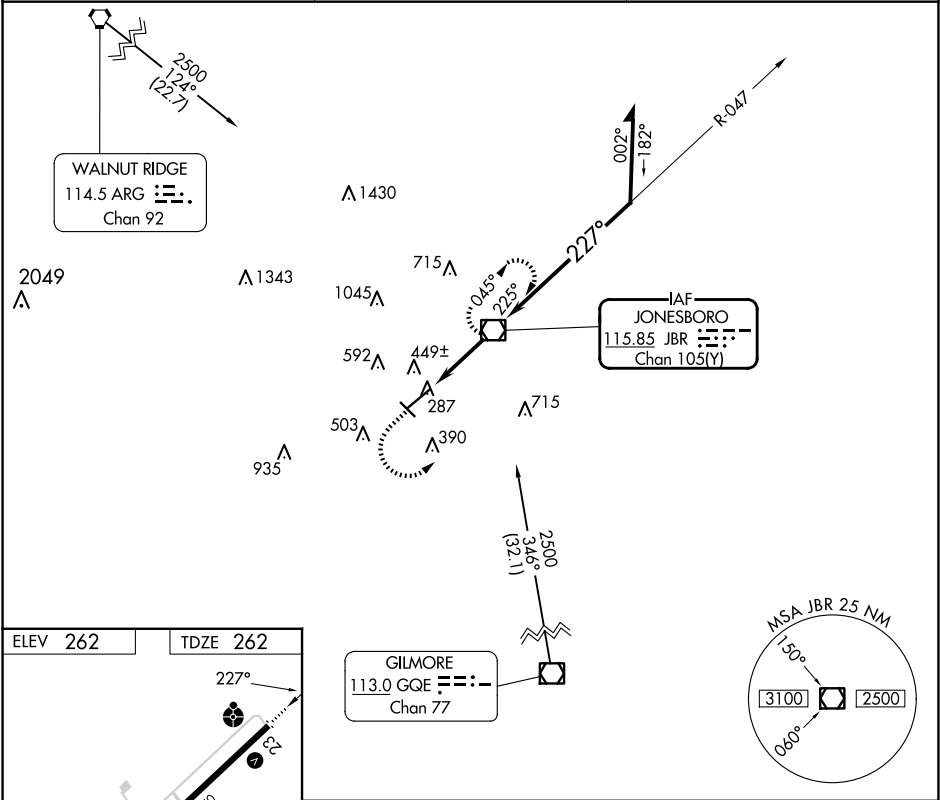
⚠ Circling Rwy 31 NA at night. Circling NA northwest of Rwy 5-23.

⚠ Rwy 23 helicopter visibility reduction below ¾ SM NA. When local altimeter not received, use Walnut Ridge altimeter setting and increase all MDAs 60 feet and S-23 Cat C/D visibility ½ SM and Circling Cat C ¼ SM.

ODALS

MISSED APPROACH: Climb to 2000 then climbing left turn to 2300 direct JBR VOR/DME and hold.

ASOS 118.525	MEMPHIS CENTER 120.075 289.4	UNICOM 123.0 (CTAF) 0
-----------------	---------------------------------	--------------------------



ELEV 262 TDZE 262

MIRL Rwy 5-23 and 13-31 0

FAF to MAP 3.1 NM

Knots	60	90	120	150	180
Min:Sec	3:06	2:04	1:33	1:14	1:02

2000	2300	JBR	JBR VOR/DME 2500	Remain within 10 NM
↑	↶		JBR 1.9	047°
			JBR 3.1	227°
			≤ 3.00° TCH 54	2000
			1.2 1.9 NM	1300
CATEGORY	A	B	C	D
S-23	700-¾ 438 (500-¾)		700-1⅛ 438 (500-1⅛)	
CIRCLING	740-1 478 (500-1)		820-1½ 558 (600-1½)	1080-2¾ 818 (900-2¾)