

WAAS CH 77820 W05A	APP CRS 050°	Rwy Idg 6200 TDZE 259 Apt Elev 262
--	------------------------	---

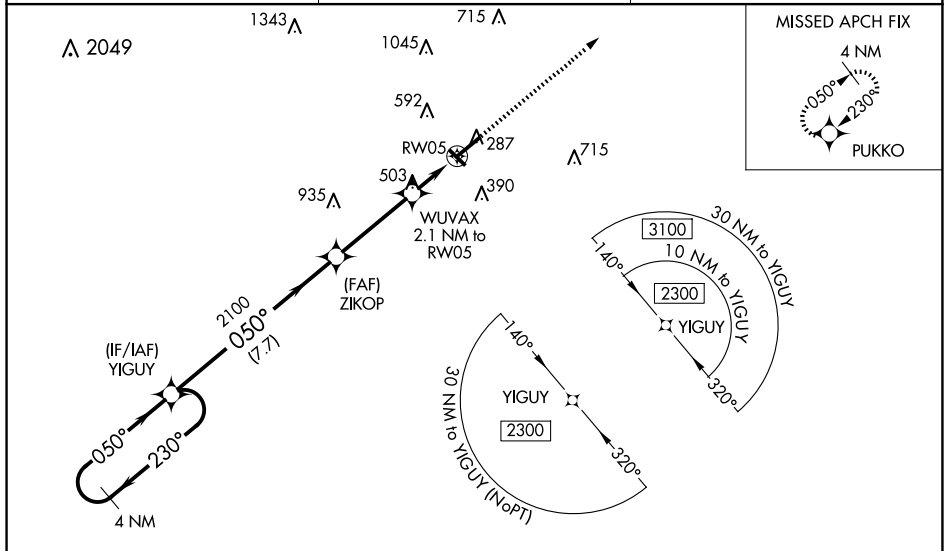
RNAV (GPS) RWY 5
JONESBORO MUNI (JBR)

RNP APCH.

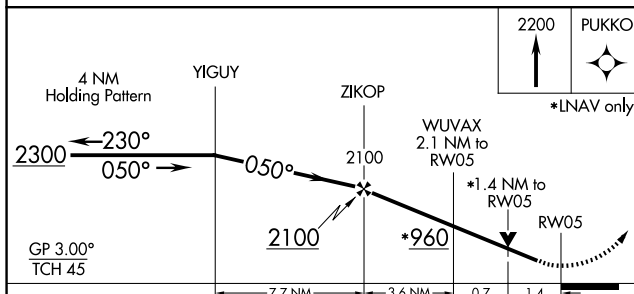
V Circling Rwy 31 NA at night. Baro-VNAV and VDP NA when using Walnut Ridge altimeter setting. For uncompensated Baro-VNAV systems, LNAV/VNAV NA below -12°C or above 54°C. Circling NA northwest of Rwy 5-23. Rwy 5 helicopter visibility reduction below ¾ SM NA. When local altimeter setting not received, use Walnut Ridge altimeter setting: increase LPV DA to 593 feet and visibility ½ SM, and LNAV/VNAV DA to 669 feet; increase all MDAs 60 feet and visibility LNAV Cats C/D and Circling Cat C ¼ SM.

MISSED APPROACH:
Climb to 2200 direct
PUKKO and hold.

ASOS 118.525	MEMPHIS CENTER 120.075 289.4	UNICOM 123.0 (CTAF) ①
------------------------	--	---------------------------------



ELEV 262		TDZE 259
----------	--	----------



CATEGORY		A		B		C		D	
LPV	DA	539-7/8				280 (300-7/8)			
LNAV/ VNAV	DA	615-1 1/8				356 (400-1 1/8)			
LNAV	MDA	760-1	501 (500-1)		760-1 3/8		501 (500-1 3/8)		
CIRCLING		760-1	498 (500-1)		820-1 1/2 558 (600-1 1/2)		1080-2 3/4 818 (900-2 3/4)		

