



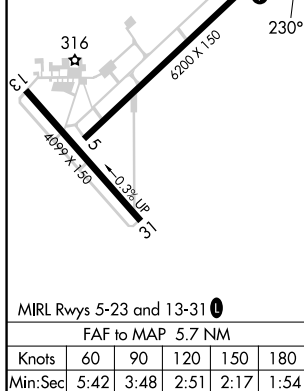
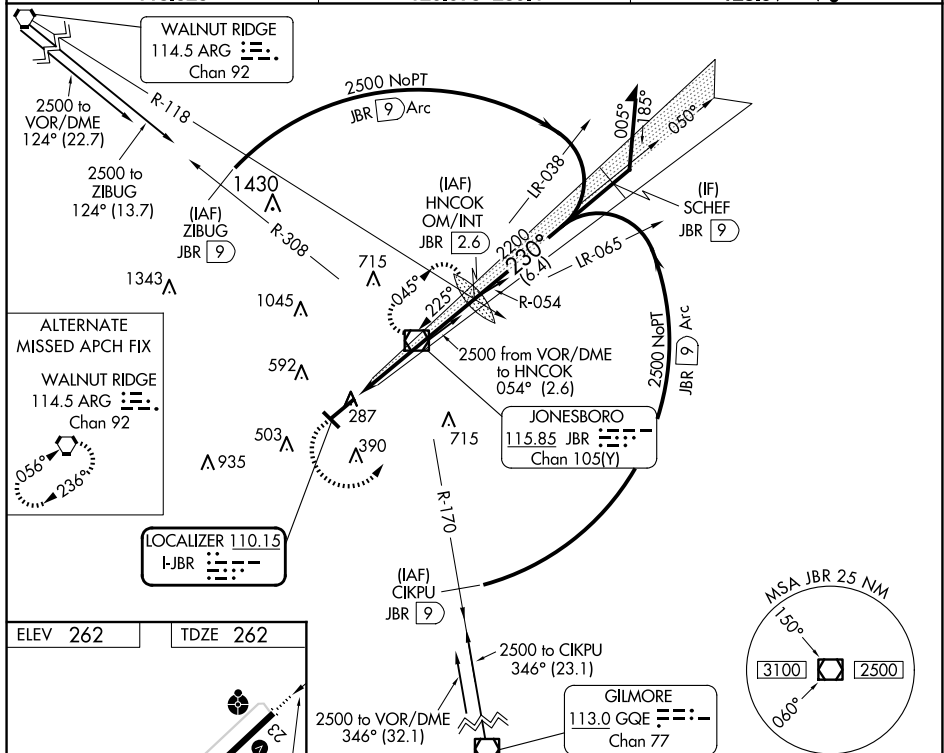
LOC I-JBR <u>110.15</u>	APP CRS 230°	Rwy Idg 6200 TDZE 262 Apt Elev 262
-----------------------------------	------------------------	---

ILS or LOC RWY 23

JONESBORO MUNI (JBR)

- | | | | |
|---|---|--|---|
|  | <p>Circling NA northwest of Rwy 5-23. Rwy 23 helicopter visibility reduction below $\frac{3}{4}$ SM NA. When local altimeter not received, use Walnut Ridge altimeter setting: increase DA to 600 feet and all visibilities $\frac{1}{2}$ SM; increase all MDAs 60 feet, S-LOC 23 Cat C/D visibility $\frac{1}{2}$ SM and Circling Cat C $\frac{1}{4}$ SM. For inop ALS, increase S-LS 23 Cat A/B visibility to $\frac{1}{2}$ SM and S-LOC 23 Cat C/D to $\frac{1}{2}$ SM. For inop ALS when using Walnut Ridge altimeter setting, increase S-LS 23 Cat A/B visibility to 1 SM. When using Walnut Ridge altimeter setting, inop table does not apply to S-LOC 23 Cats C/D. Circling Rwy 31 NA at night.</p> | <p>ODALS</p>  | <p>MISSED APPROACH: Climb to 2000 then climbing leftward to 2300 direct JBR VOR/DME and hold.</p> |
|---|---|--|---|

ASOS 118.525	MEMPHIS CENTER 120.075 289.4	UNICOM 123.0 (CTAF)
-----------------	---------------------------------	------------------------

[illegible]