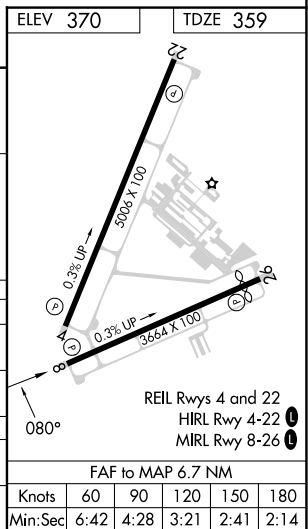
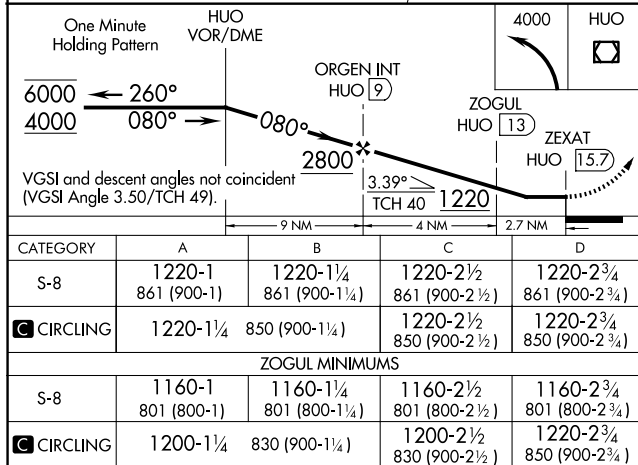
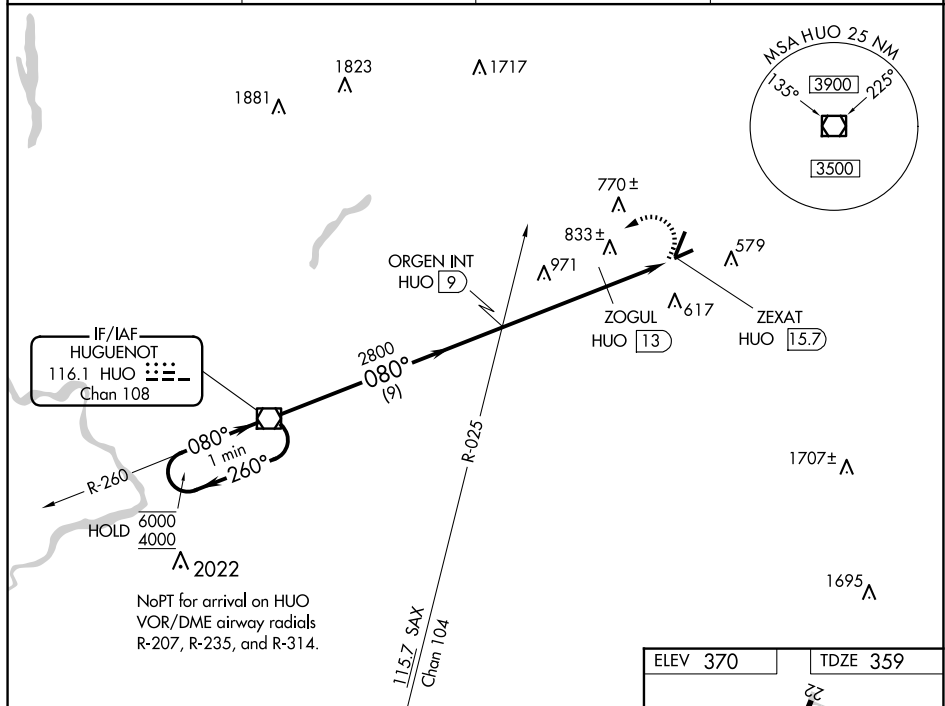


24305

VOR RWY 8
ORANGE COUNTY (MGJ)

MISSED APPROACH: Climbing left turn to 4000 direct HUO VOR/DME and hold.

ASOS 119.275	NEW YORK APP CON 132.75 363.1	CLNC DEL 123.85	AUNICOM 122.725 (CTAF) 0
------------------------	---	---------------------------	------------------------------------



ORANGE COUNTY (MGJ)
VOR RWY 8

NE-2, 10 JUL 2025 to 07 AUG 2025