

WAAS CH 61005 W21A	APP CRS 207°	Rwy ldg TDZE 980 Apt Elev 996
--	------------------------	---

RNAV (GPS) RWY 21

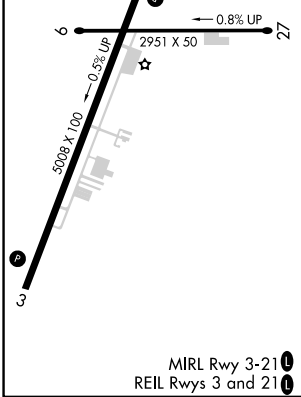
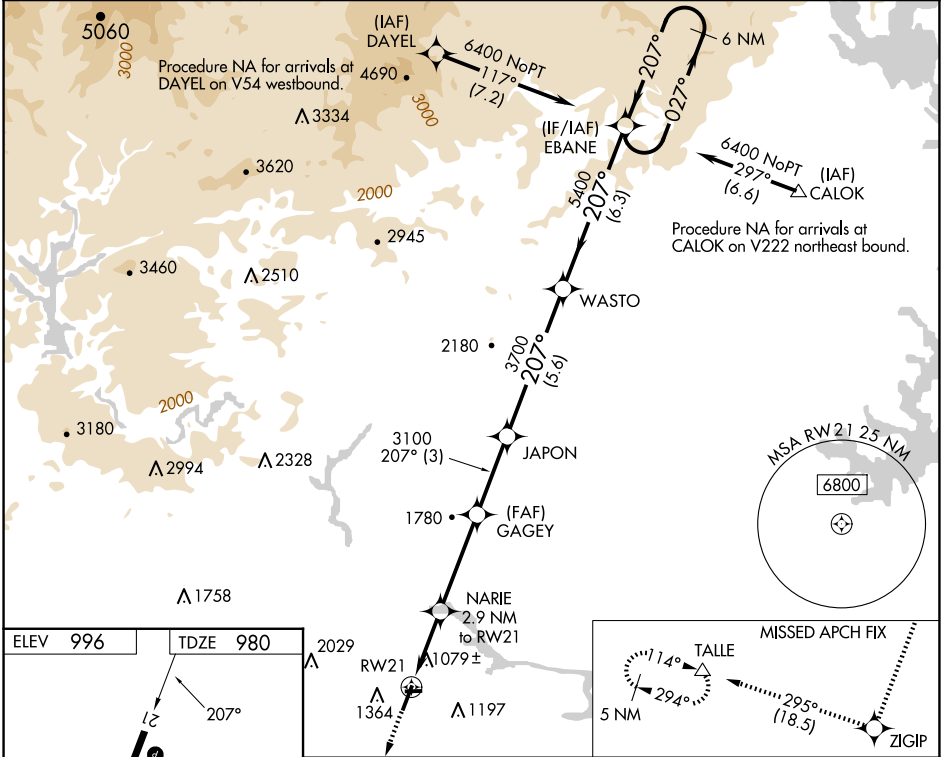
TOCCOA RG LETOURNEAU FLD (TOC)

RNP APCH

Baro-VNAV and VDP NA when using Gainesville altimeter setting. For uncompensated Baro-VNAV systems, LNAV/VNAV NA below -8°C or above 54°C. When local altimeter setting not received, use Gainesville altimeter setting: Increase LPV DA to 1345 feet, LNAV/VNAV DA to 1510 feet, and increase all MDAs 120 feet, increase LNAV/LNAV visibility all Cats ½ SM, LNAV visibility Cats C/D ¾ SM and Circling visibility Cats A/B ¼ SM and Cat C ½ SM. Circling Rwy 9, 27 NA at night.

MISSED APPROACH: Climb to 5800 direct ZIGIP and on track 295° to TALLE and hold, continue climb-in-hold to 5800.

AWOS-3 119.625	ATLANTA CENTER 134.8 379.95	UNICOM 122.8 (CTAF) 0
--------------------------	---------------------------------------	---------------------------------



5800	ZIGIP	TALLE	* LNAV only		EBANE	6 NM Holding Pattern
↑		tr 295°			JAPON	WASTO
* 1.8 NM to RW21		NARIE 2.9 NM to RW21	GAGEY 3100	3700	5400	6400
RW21		* 1920	3100	3700	5400	6400
→ 1.8 1.1 NM		→ 3.7 NM	→ 3 NM	→ 5.6 NM	→ 6.3 NM	
CATEGORY	A		B	C	D	
LPV DA	1230-1		250 (300-1)			
LNAV/VNAV DA	1395-1½		415 (400-1½)			
LNAV MDA	1560-1 580 (600-1)		1560-1½ 580 (600-1½)			
CIRCLING	1720-1 724 (800-1)		1760-2¼ 764 (800-2¼)	2480-3 1484 (1500-3)		