

WAAS
CH **56206**
W17A

APP CRS
175°

Rwy Idg **8006**
TDZE **213**
Apt Elev **214**

RNAV (GPS) RWY 17

BOB SIKES (CEW)

RNP APCH.

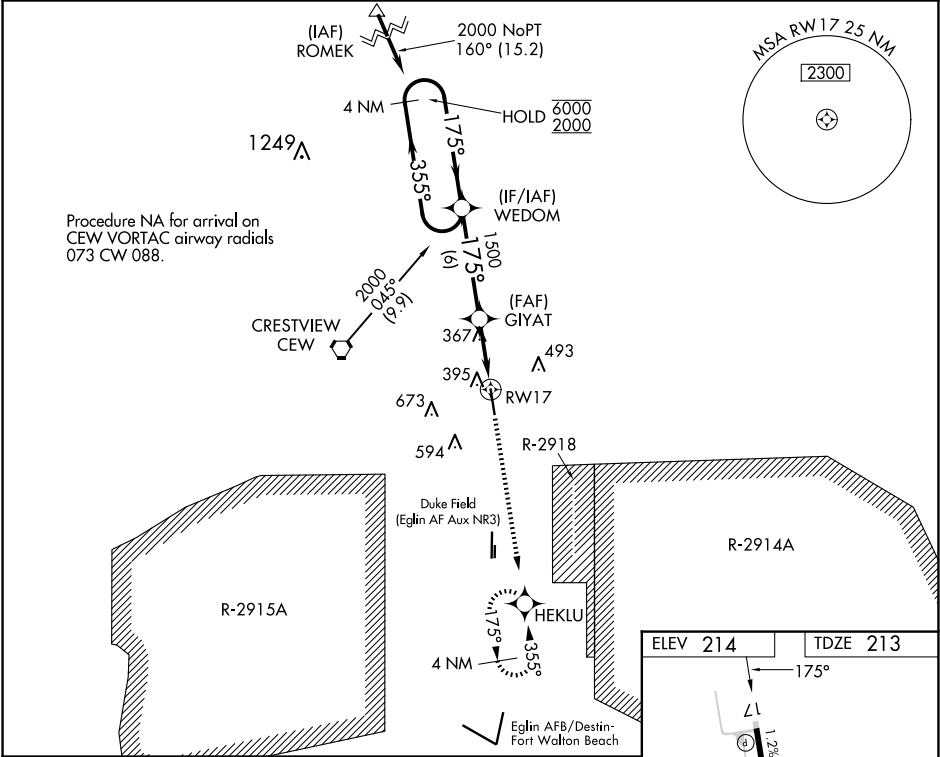
▼

▲

Circling NA for Cat D west of Rwy 17-35. Baro-VNAV and VDP NA when using EGLIN AFB altimeter setting. When local altimeter setting not received, use Eglin AFB altimeter setting and increase LPV DA to 529, LNAV/VNAV DA to 699 and all MDA 60 feet. For uncompensated Baro-VNAV systems, LNAV/VNAV NA below -5°C or above 54°C.

MISSED APPROACH: Climb to 2000 direct HEKLU and hold.

ASOS 119.275	EGLIN APP CON 124.05 284.65	UNICOM 123.075 (CTAF) 0
------------------------	---------------------------------------	-----------------------------------



4 NM Holding Pattern

WEDOM

GIYAT

HEKLU

6000 ← 355°

2000 → 175°

GP 3.00°

TCH 51

1500

1500

1500

1500

6 NM

2.6 NM

1.2 NM

*1.2 NM to RW17

*LNAV only.

CATEGORY	A	B	C	D
LPV DA	470-1 257 (300-1)			
LNAV/VNAV DA	640-1½ 427 (500-1½)			
LNAV MDA	660-1 447 (500-1)	660-1¼ 447 (500-1¼)	660-1½ 447 (500-1½)	660-1½ 447 (500-1½)
CIRCLING	700-1 486 (500-1)	820-1¾ 606 (700-1¾)	840-2 626 (700-2)	840-2 626 (700-2)

ELEV 214

TDZE 213

175°

1.2% DOWN

8006 X 150

0.3% UP

35

HIRL Rwy 17-35 0